

[54] EQUIPMENT FOR REPRODUCTION OF ALPHANUMERICAL DATA

[75] Inventors: **Pietro Belisomi**, Pinerolo; **Attilio Farina**, Torino, both of Italy

[73] Assignee: **Indesit Industria Elettrodomestici Italiana SpA**, Rivalta, Italy

[21] Appl. No.: 393,127

[22] Filed: Jun. 28, 1982

[30] Foreign Application Priority Data

Jun. 29, 1981 [IT] Italy 67892 A/81
 Mar. 9, 1982 [IT] Italy 67274 A/82

[51] Int. Cl.⁴ G09G 1/00

[52] U.S. Cl. 340/711; 340/721;
 340/286 M; 368/10; 368/28

[58] Field of Search 340/721, 711, 745;
 368/28, 29, 10

[56] References Cited

U.S. PATENT DOCUMENTS

3,891,792	6/1975	Kimura	340/745
3,898,644	8/1975	Baxter	368/28
4,051,522	9/1977	Healy	340/745
4,087,958	5/1978	Ebihara	368/29
4,194,196	3/1980	Mohiuddin	368/29
4,253,169	2/1981	Salah	368/28
4,386,436	5/1983	Kocher	340/286 M
4,393,376	7/1983	Thomas	340/745

Primary Examiner—Marshall M. Curtz
 Attorney, Agent, or Firm—Michael N. Mellner

[57] ABSTRACT

The invention relates to a television set provided with an alphanumerical display device for displaying on the television screen (6), as an alternative to the received

video picture, another complete picture constituted by alphanumerical data which can comprise all the letters in the alphabet, the numbers from 0 to 9 and graphic symbols.

The invention also relates to a receiver provided with color picture display means for displaying, following a control from the user, a calendar data constituted by at least one of the said colour pictures and composed of alphanumerical characters.

The invention also relates to a receiver for receiving radioelectric signals which is provided with an alphanumerical character display device in which the tuning of a radioelectric signal takes place by means of a message from the user composed of alphanumerical characters and representative of the station which transmits the said radioelectric signal.

The invention relates furthermore to a receiver comprising reproducer means for reproducing on a display screen, or reproducer printing means or vocal reproducer means for the reproduction of alphanumerical data, in which the instruction from the user for the generation of the alphanumerical data coded control signals takes place by means of telecontrol unit.

All the said receivers comprise a control unit (1, 2) comprising an alphanumerical keyboard apt to generate at least as many coded control signals as the characters which can be generated for being reproduced, a control unit (3) for the detection of the control signals generated by the control unit, and circuit means (4) for generating, through reproducer means (5), the alphanumerical data formed by the said selected characters.

23 Claims, 15 Drawing Figures

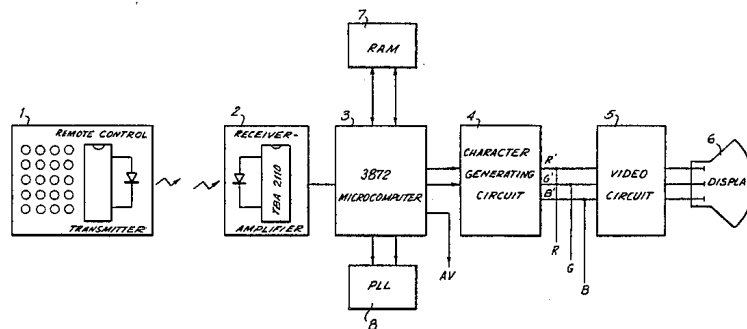


FIG. 1

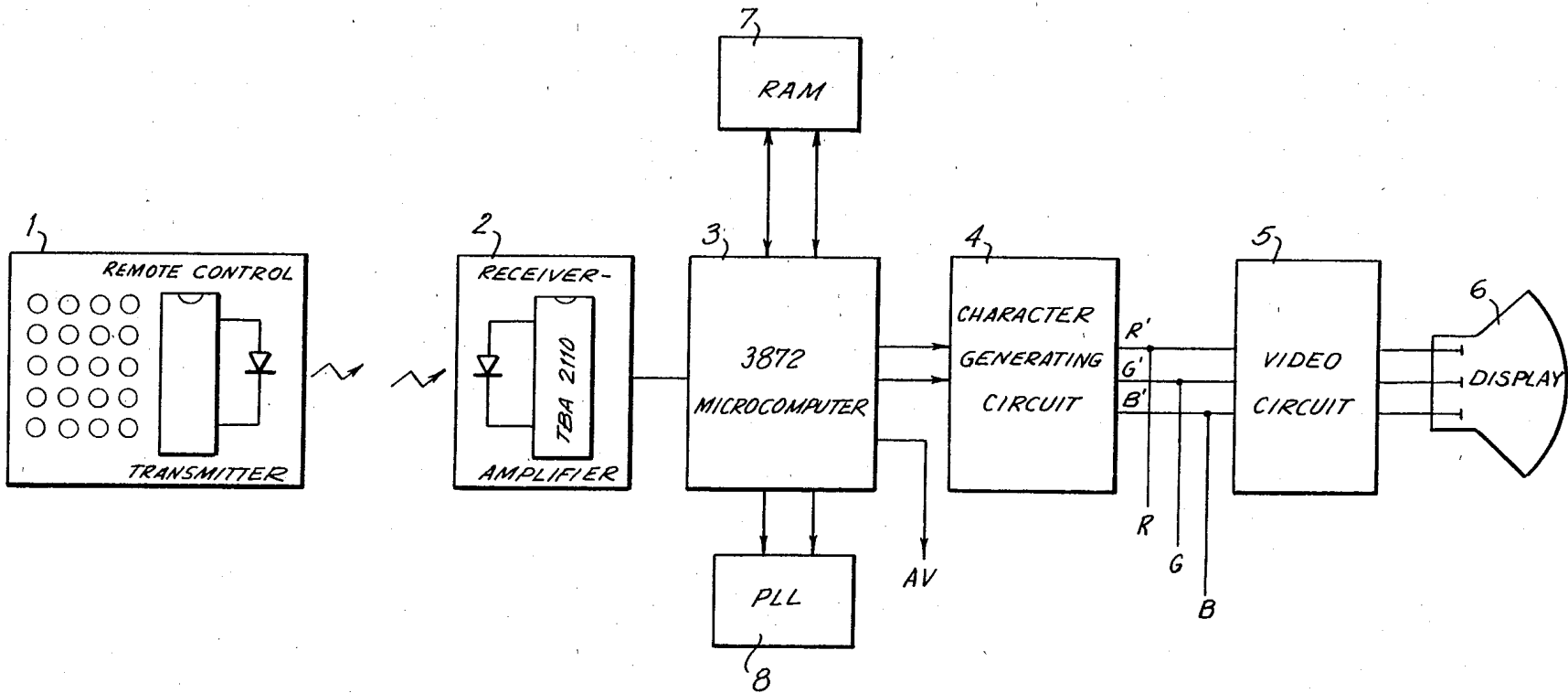
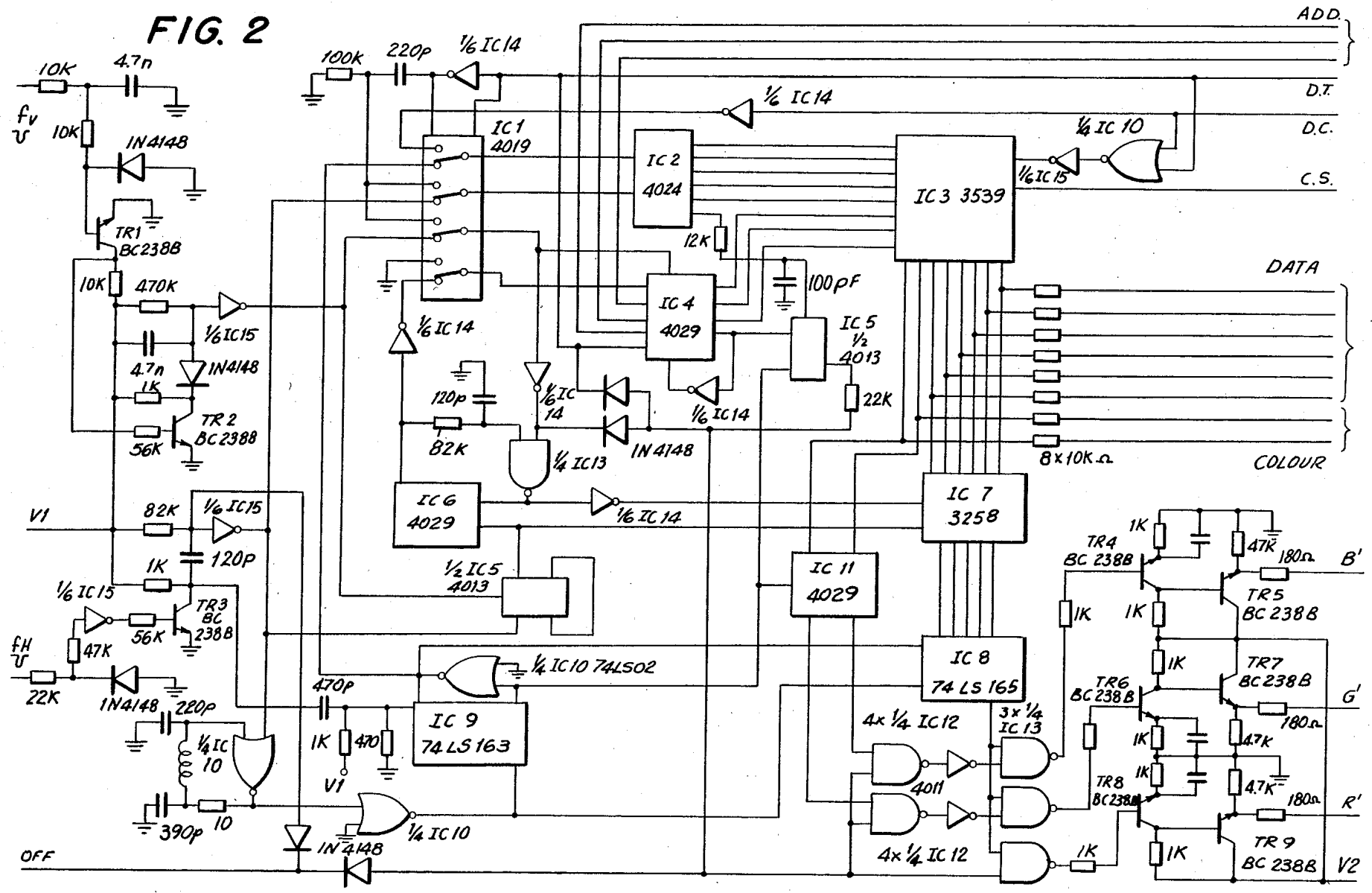


FIG. 2



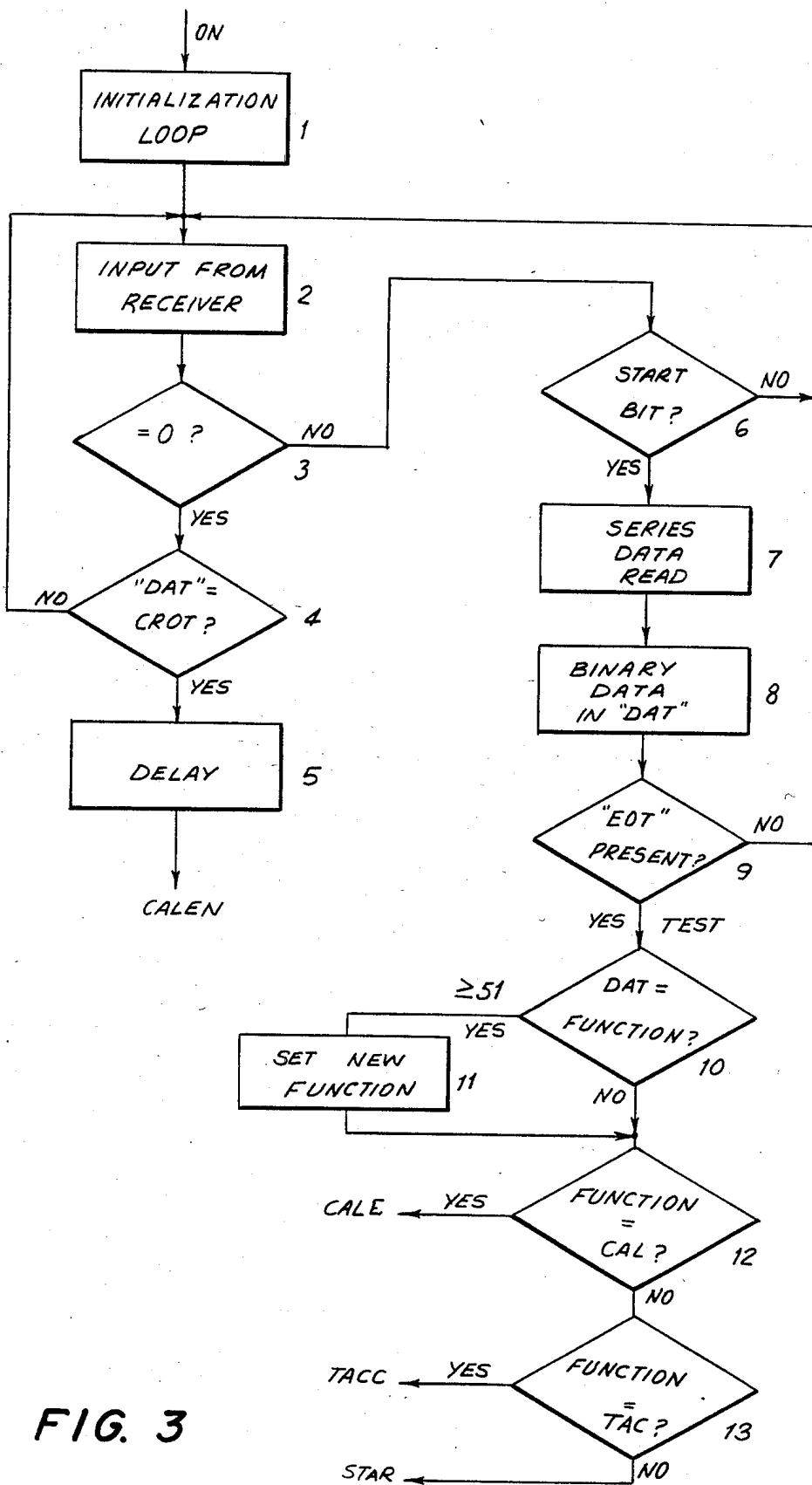


FIG. 3

FIG. 4

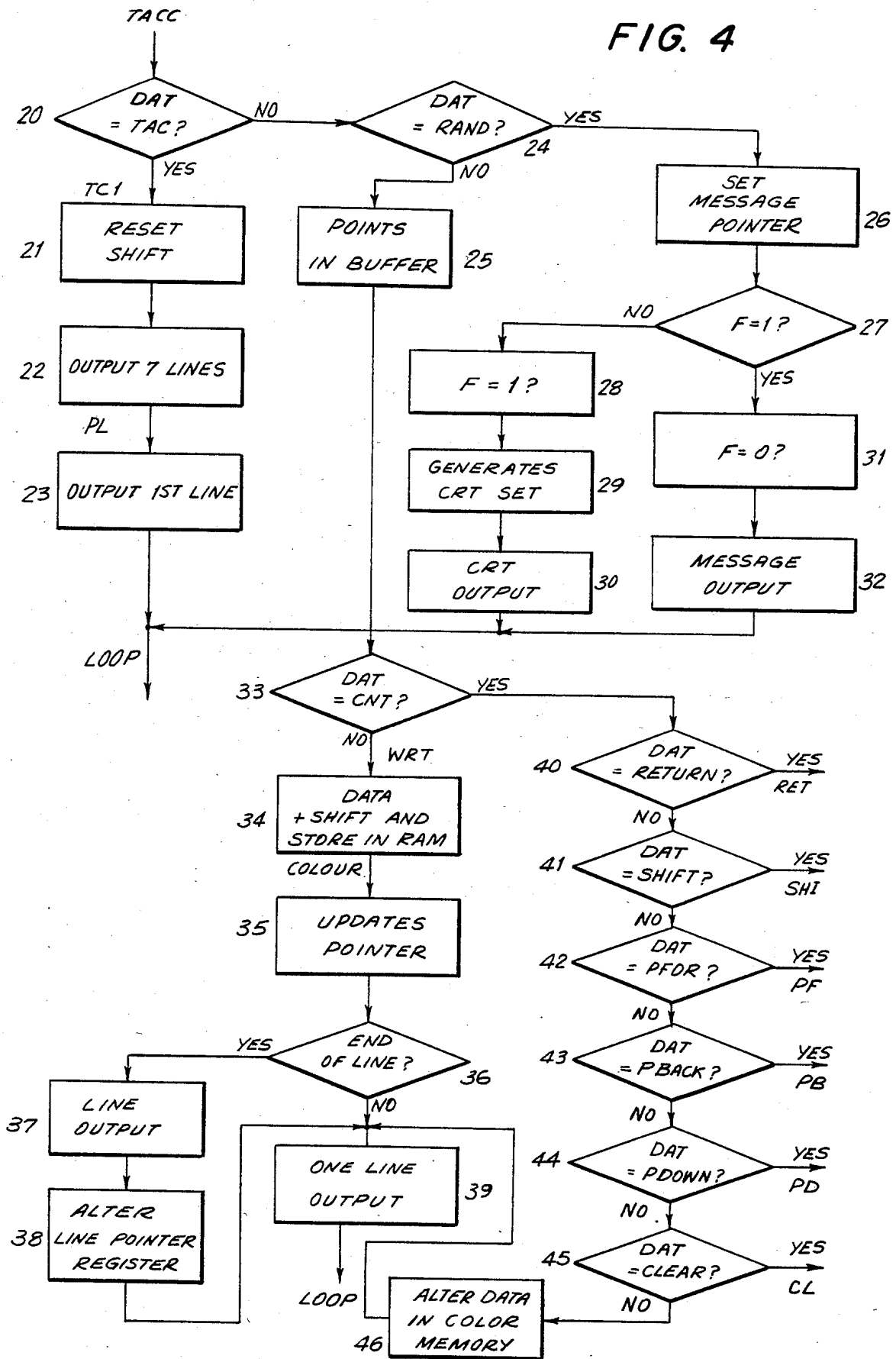


FIG. 5

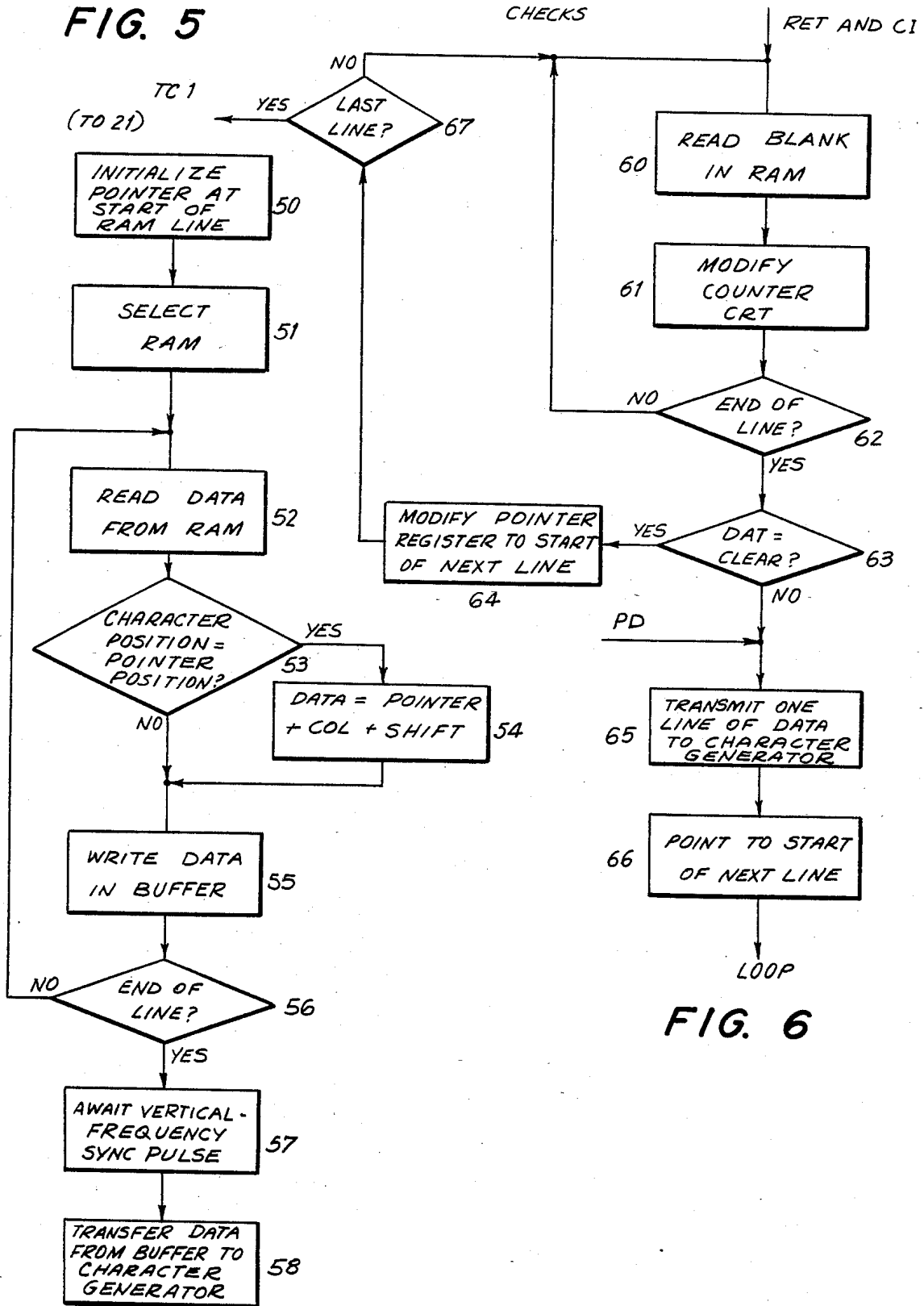
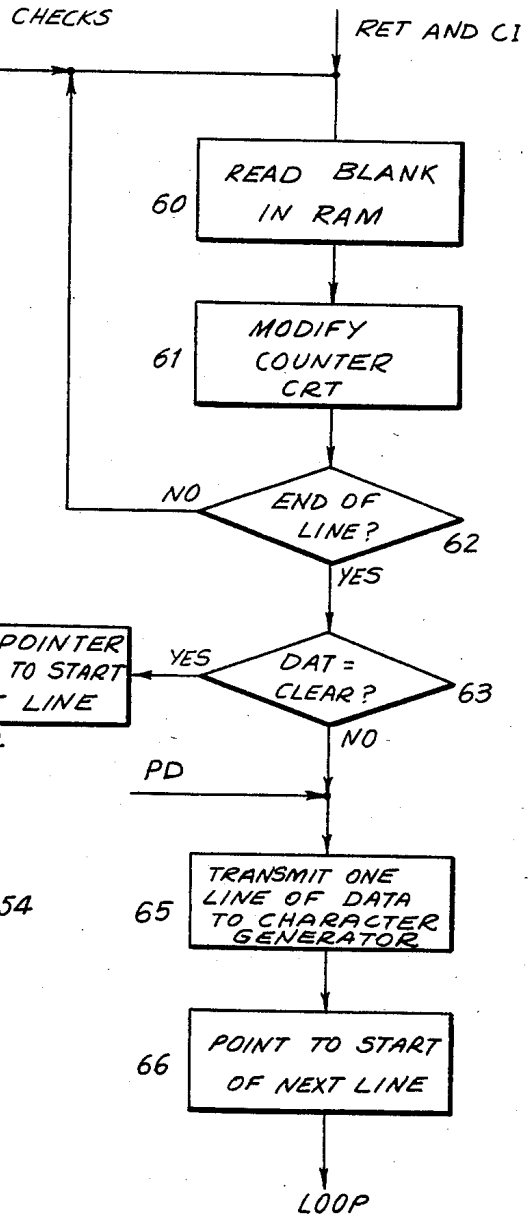


FIG. 6



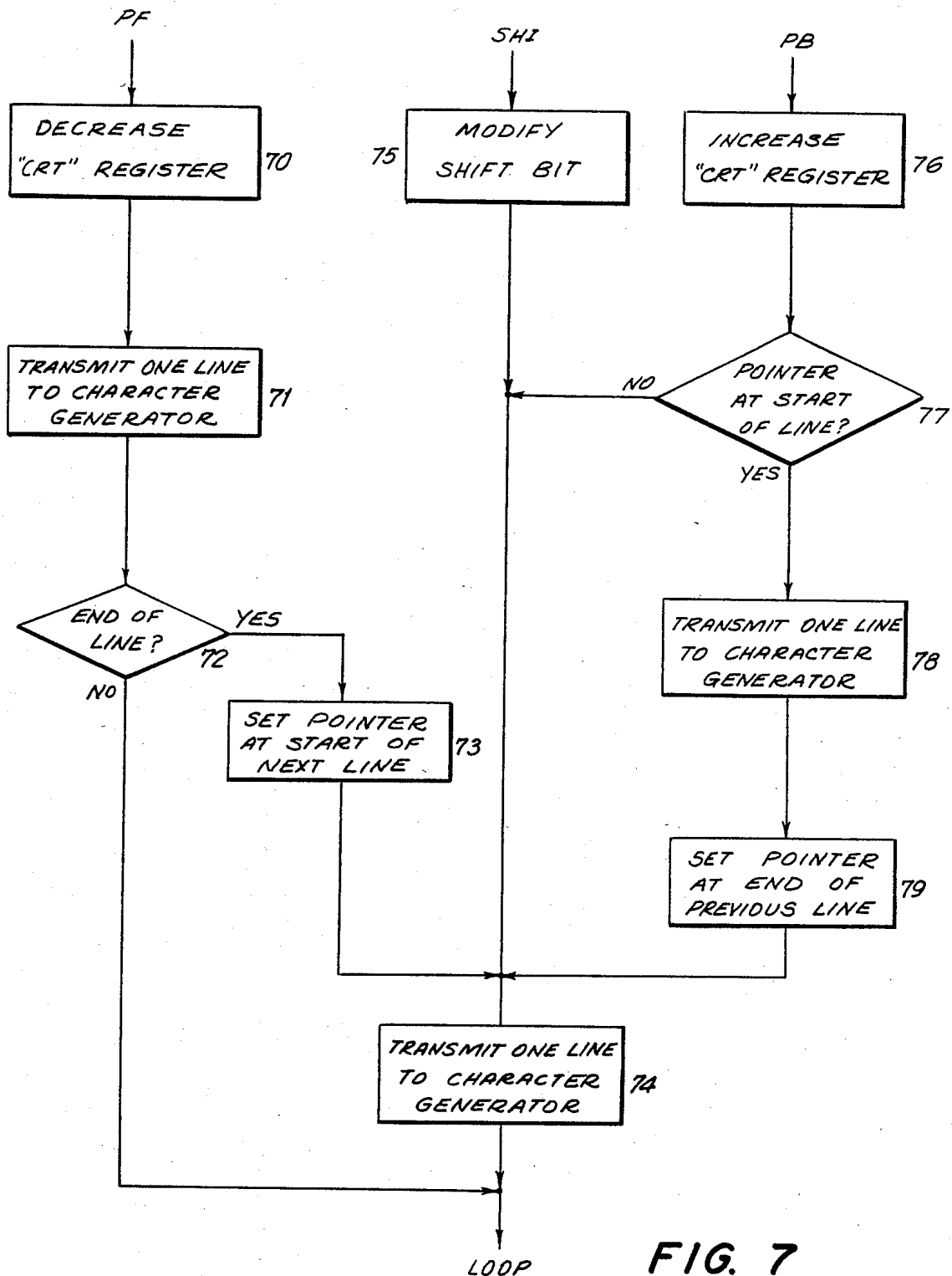


FIG. 7

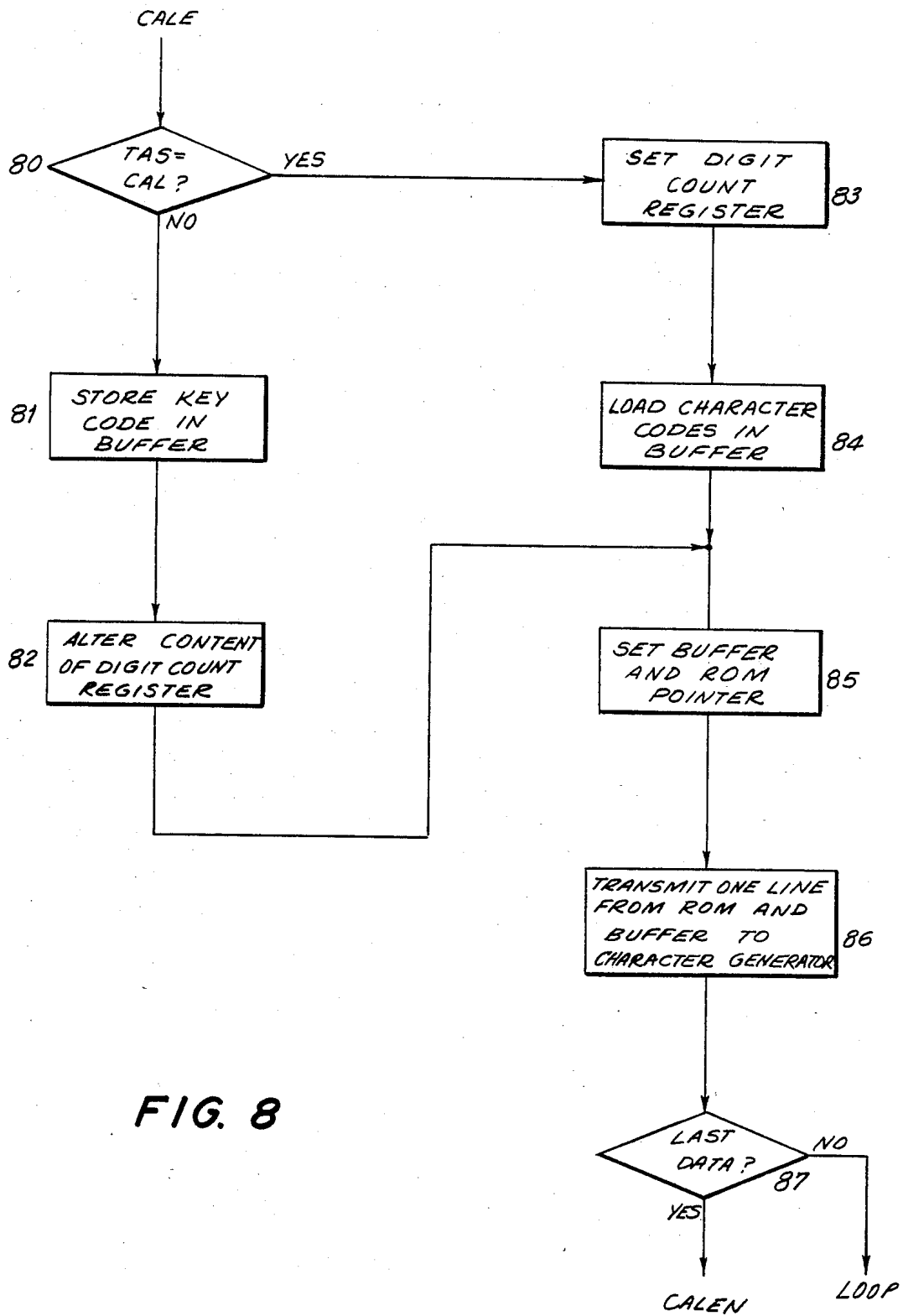


FIG. 8

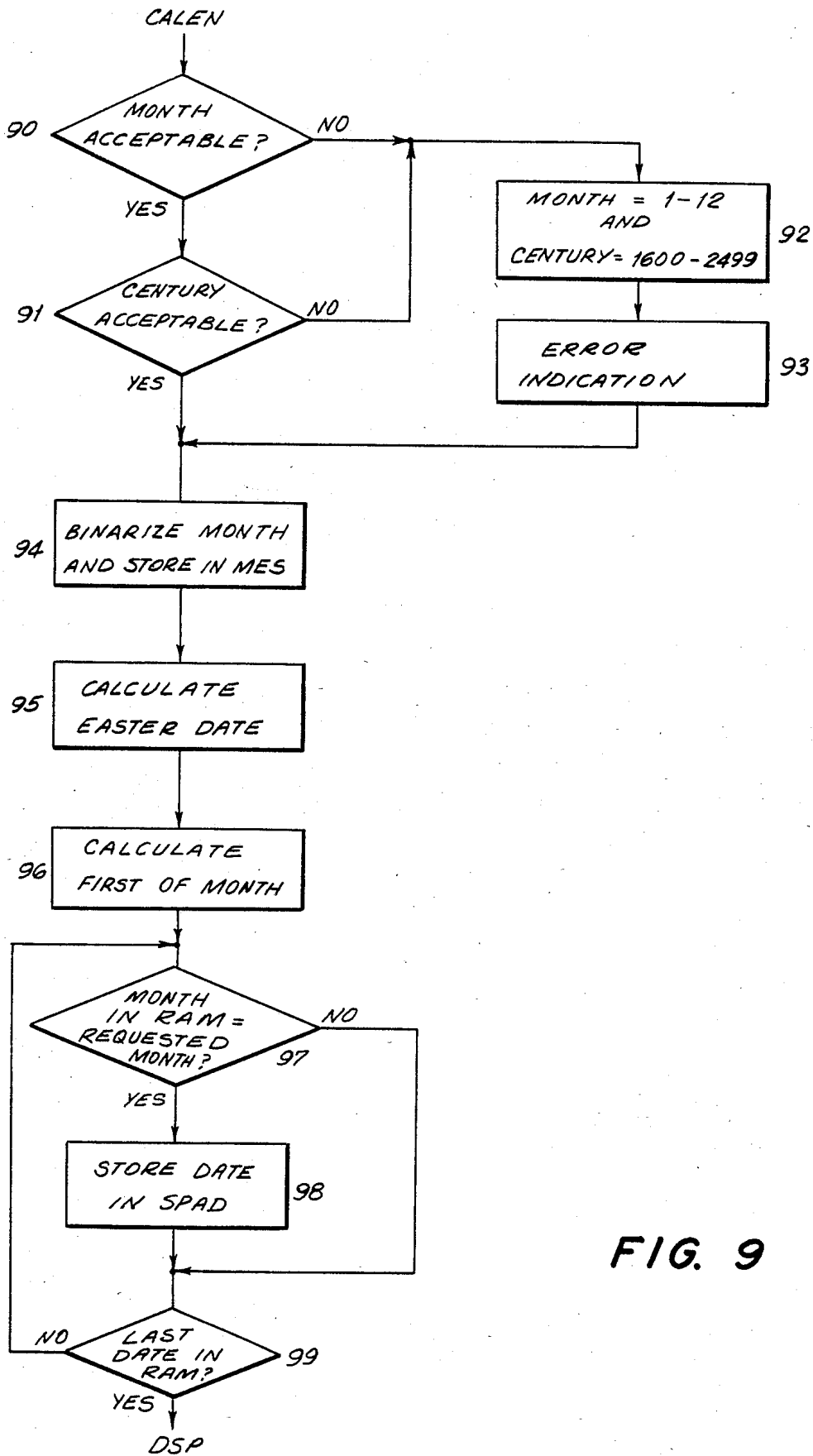


FIG. 9

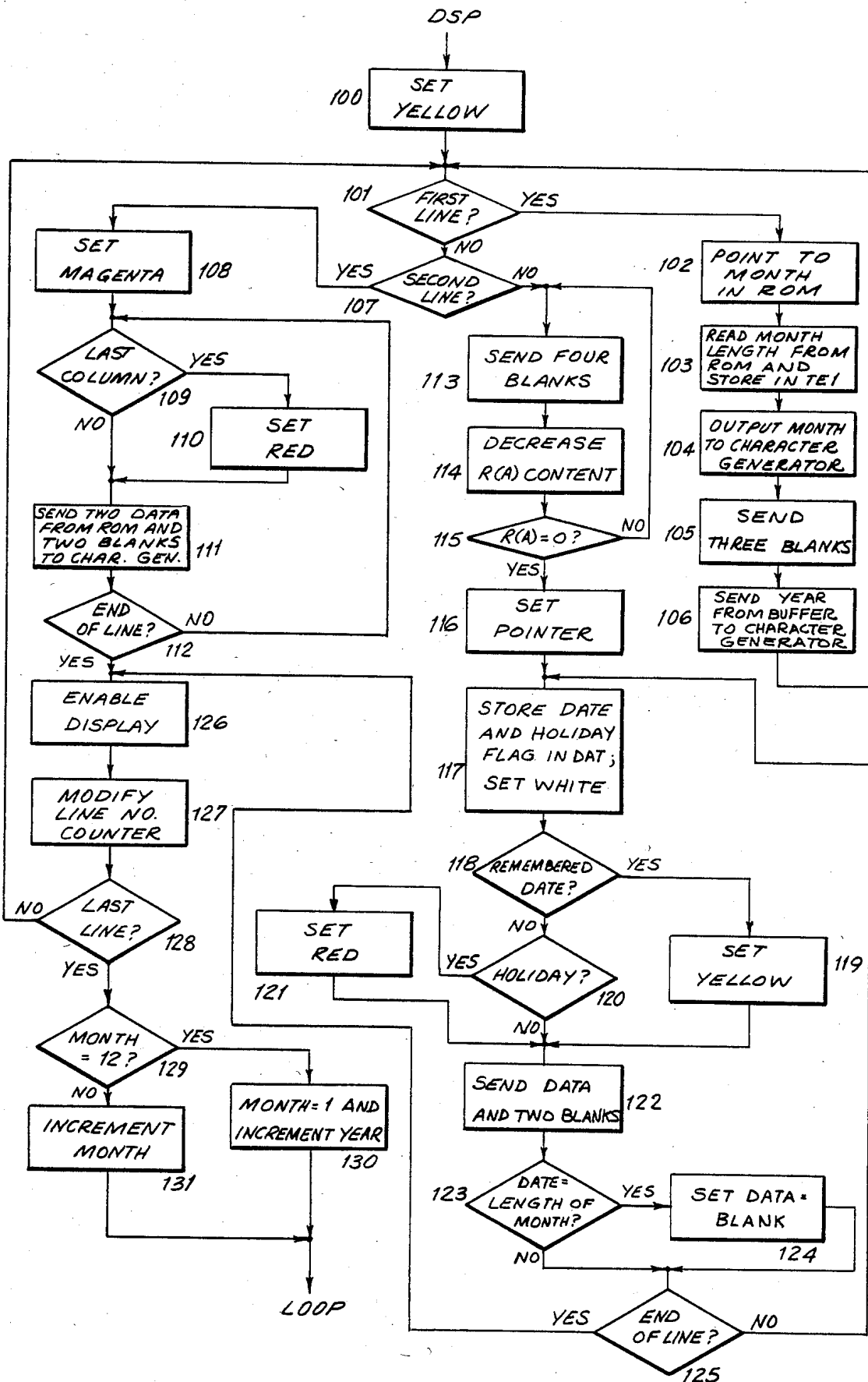


FIG. 10

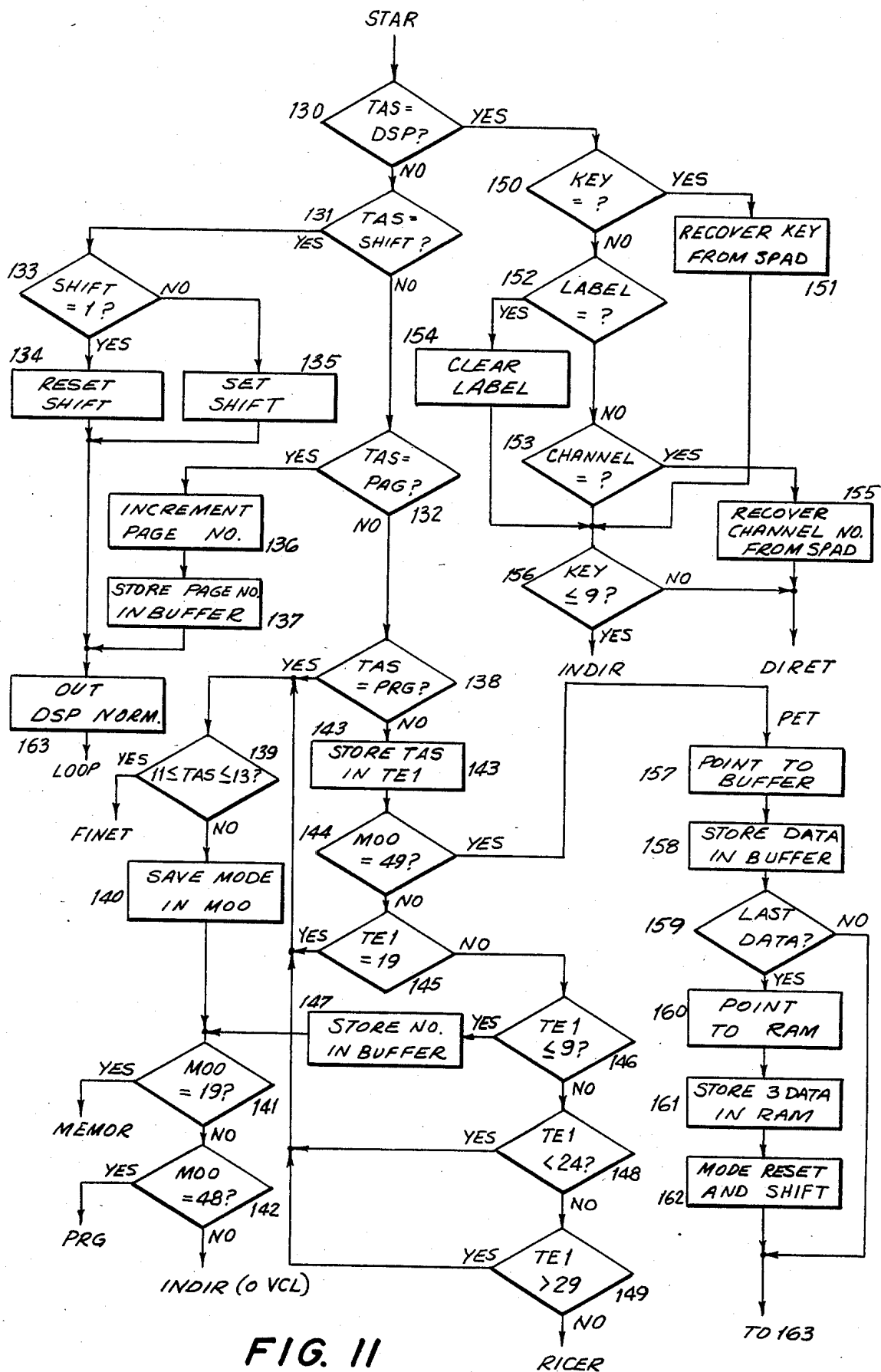


FIG. II

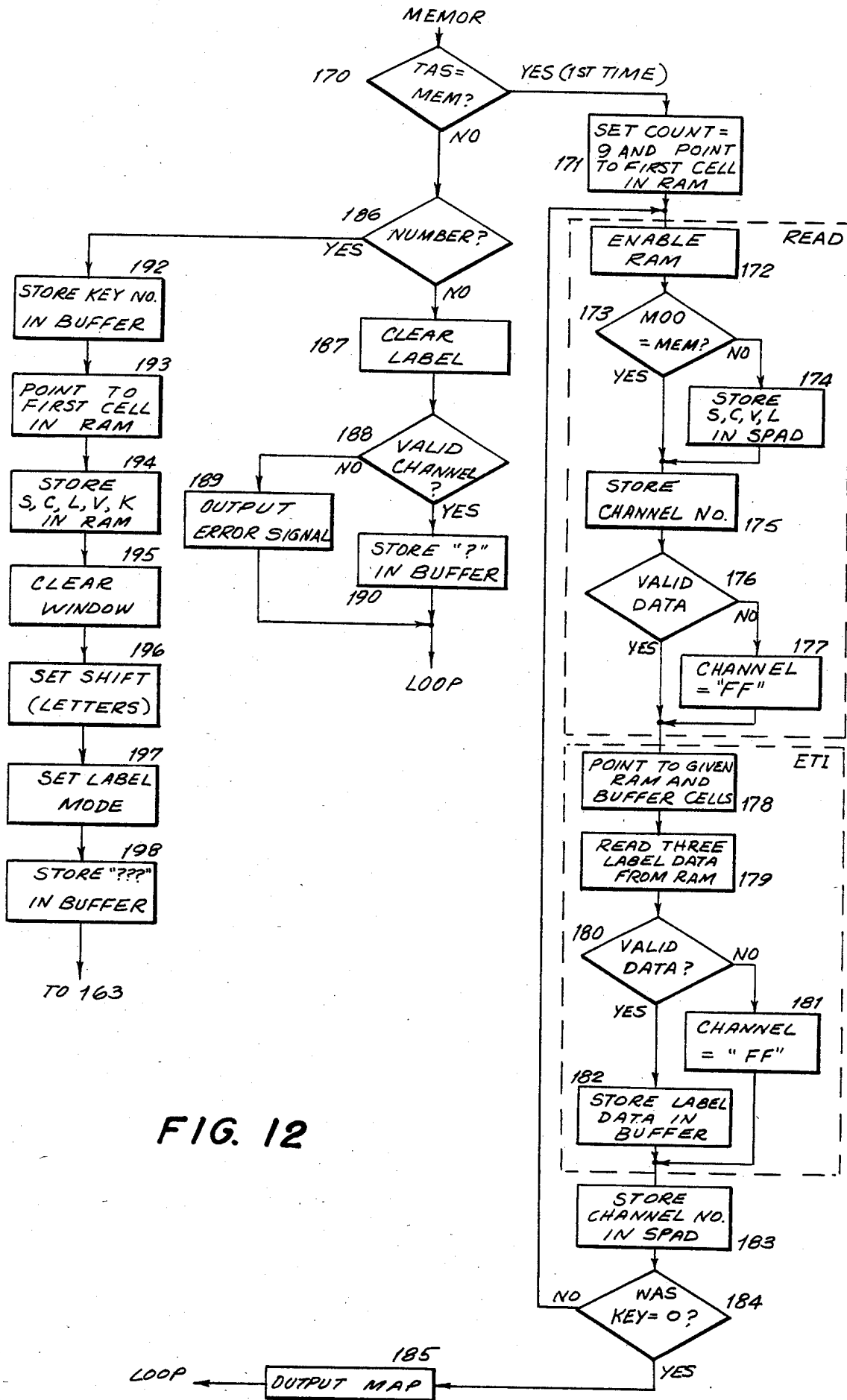


FIG. 12

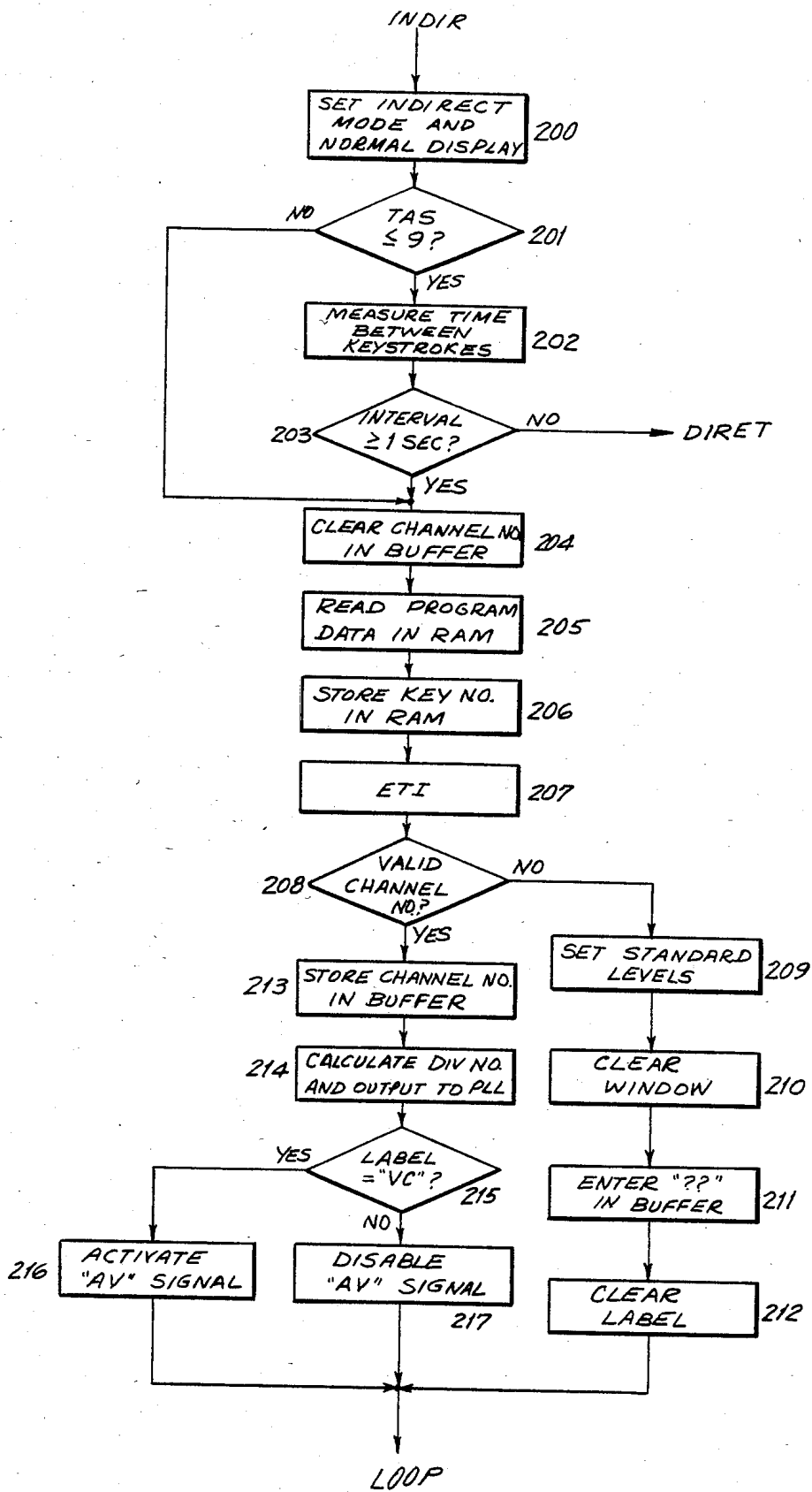


FIG. 13

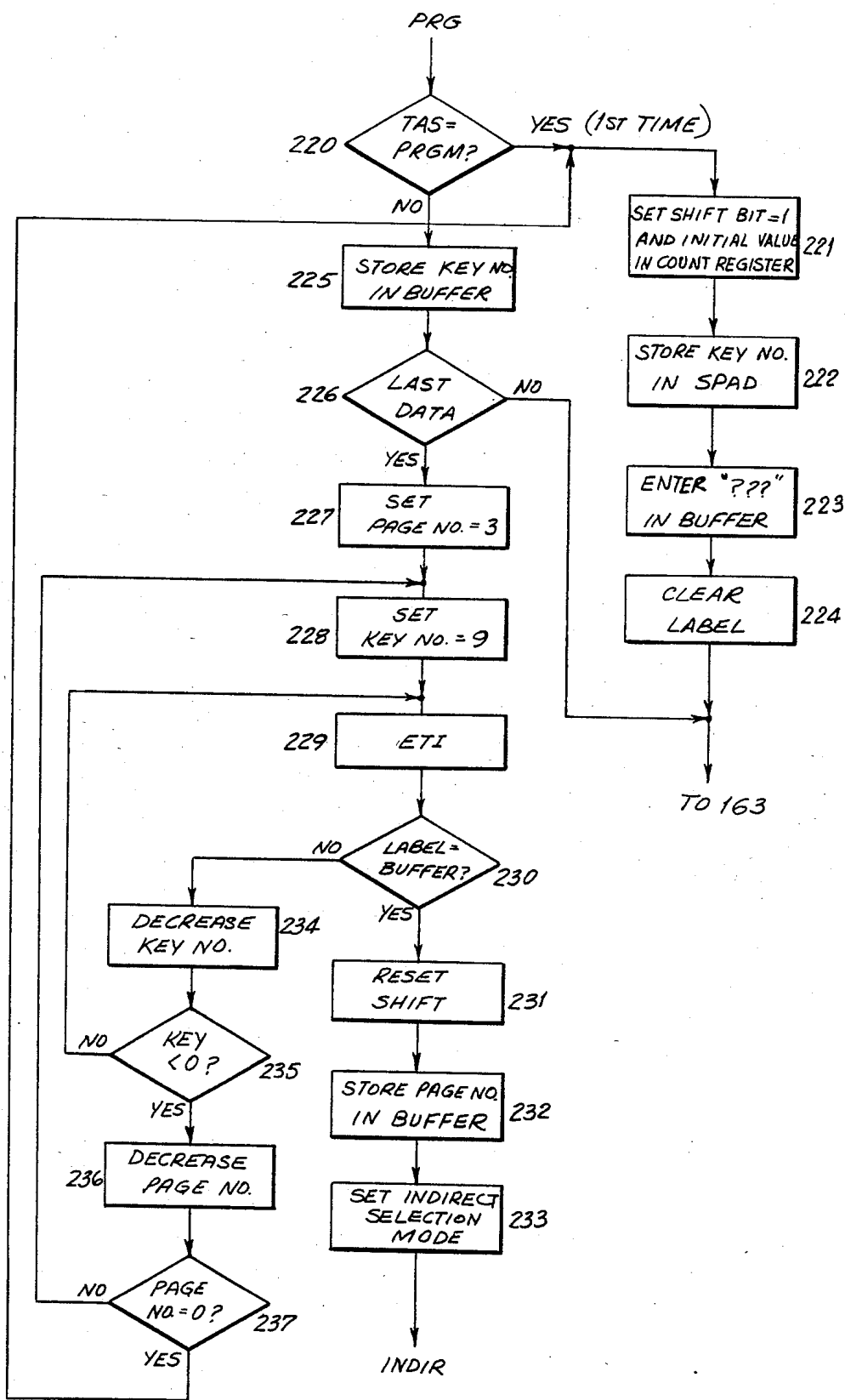
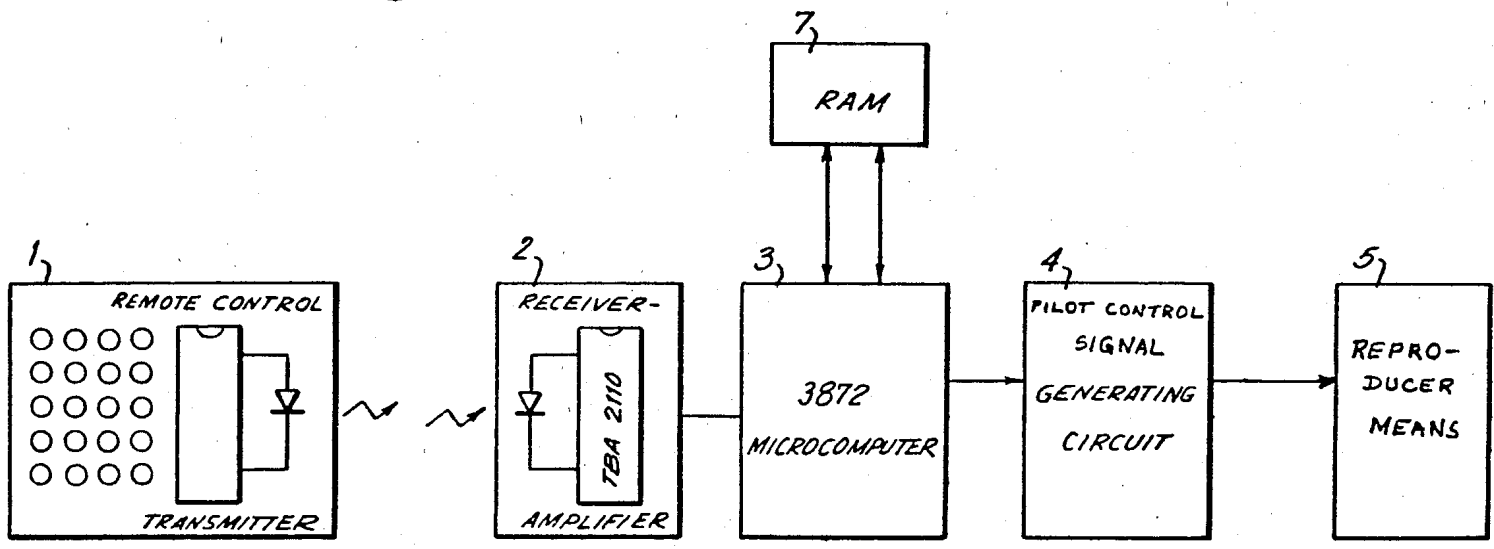


FIG. 14

FIG. 15



EQUIPMENT FOR REPRODUCTION OF ALPHANUMERICAL DATA

BACKGROUND OF THE INVENTION

The present invention relates to an equipment for reproduction of alphanumerical data, which comprises an operating unit having an alphanumerical keyboard adapted to generate at least as many coded control signals as the characters which can be generated for reproduction, a control unit for the detection of the control signals generated by the operating unit, and circuit means for the generation, through reproducer means, of alphanumerical data formed by the characters selected by means of the operating unit.

The equipment, in its various configurations, may be a television set provided with an alphanumerical display device adapted to display alphanumerical data on the television screen; it may be a generic apparatus, in particular a television set, provided with color picture display means for displaying the alphanumerical data; it may be a radioelectric signal receiver, for example a television set or a radio set, provided with an alphanumerical character display device; it may be an apparatus comprising means for the reproduction of alphanumerical data on a display screen (television set, peripheral unit in a computer system, etc.) or reproducer printing device (typewriter, printing machine in a computer system) or vocal reproducer devices.

The known prior art apparatuses are designed to perform various functions (for example, for a television set, direct channel selection, the memorization of a large number of programs, time display, timed turn-on or program switching, etc.) which can be performed easily with the aid of a suitably programmed microprocessor.

The television sets are preferably fitted with display devices for supplying data relative to the foregoing functions. However, these display devices are usually only designed to provide a numerical indication of the time, channel and/or program, and the keyboards by means of which the foregoing functions are controlled possess a limited number of keys which cannot allow a large number of operations on the set.

Consequently, the microprocessor is not used to a sufficient extent as regards its data processing capacity, because of the insufficiency of the display means connected to it and the control device supplying it with the data to be processed.

SUMMARY OF THE INVENTION

The object of the present invention is to provide sets of the types mentioned hereinabove which in the performance of their various specific functions and in their control system are more sophisticated than the prior art sets, with no substantial increase in the complexity and cost of the circuits.

Therefore, on the basis of the present invention there is provided a television receiver fitted with a television screen and circuit means for generating a picture to be displayed, connected to the television screen, for displaying, following a control from the user, in substitution of the received video picture, another complete picture composed of alphanumerical data formed by characters which may comprise all the letters in the alphabet, the numbers from 0 to 9 and graphic symbols. The invention comprises a control unit, connected to the circuit means, to first read-write (RAM) memory

means and to an operating unit for receiving data from the user, characterized by the fact that the operating unit comprises an alphanumerical keyboard for generating at least as many coded control signals as the characters which may be generated by the circuits and displayed on the television screen, these operating signals being decoded by the control unit, sent to the circuits in order to allow displaying the corresponding characters on the screen and stored by the control unit in the first read-write memory means for repeat display on the screen at any time in response to a given display control operated by the user.

The present invention also provides a set fitted with color picture display means, comprising circuit means for generating color pictures, for displaying, following a operating control from the the user, data composed of at least one of the color pictures, composed of alphanumerical characters including at least the numbers from 0 to 9. The invention further comprises a control unit, connected both to the circuit means and to an operating unit for receiving data from the user, characterized by the fact that the operating unit comprises a keyboard for generating coded control signals which are sent to and decoded by the control unit, and that the control unit, when it receives the coded control signals, determines the day of the week corresponding to a given date set by the coded control signals entered by the user on the operating unit and supplies the display means with data relative to the alphanumerical characters to be displayed, so as to display the picture on a screen in at least two colors showing at least the calendar month containing the date determined by the coded control signal entered by the user.

The present invention also provides a radioelectric signal receiver fitted with at least an alphanumerical character display device, comprising a control unit connected to circuit means for controlling the display device, to radioelectric signal tuning means, to first electronic memorizing means for memorizing at least data relative to the tuning of the radioelectric signals, and to an operating unit for receiving data from the user, characterized by the fact that, in response to a first coded control signal corresponding to a message composed of alphanumerical characters and representative of the station which transmits the radioelectric signal from the operating unit, the control unit extracts from the first memorizing means the data relative to the tuning of the radioelectric signal to be sent to the tuning means, and supplies the circuit means with codes adapted to obtain the reproduction of the message on the display device.

Finally, the present invention provides a receiver comprising reproducer means for reproducing on a display screen, or printing reproducer means or vocal reproducer means, alphanumerical data formed by characters which may comprise all the letters in the alphabet, the numbers from 0 to 9 and graphic symbols, characterized by the fact that it comprises a telecontrol type operating unit comprising an alphanumerical keyboard adapted to generate at least as many coded control signals as the characters which can be generated for reproduction by the reproducer means, a control unit for the detection of the control signals generated by the operating unit, and circuit means which through the reproducer means generate the said alphanumerical data formed by the selected characters.

BRIEF DESCRIPTION OF THE DRAWINGS

The invention will now be described in detail, in order to render easy its realization, in particular with reference to the annexed drawings given by way of non-limiting example.

FIG. 1 shows a block diagram of a television set improved according to the present invention;

FIG. 2 shows a wiring diagram of some of the circuits shown diagrammatically in FIG. 1;

FIGS. 3-14 show block diagrams of the elementary functions performed by the circuits inserted inside the television set according to the invention, and

FIG. 15 shows a block diagram of a different embodiment of a set according to the present invention.

DETAILED DESCRIPTION OF THE INVENTION

In FIG. 1, reference numeral 1 indicates a remote-control transmitter comprising an alphanumeric keyboard composed conveniently of 64 keys and known infrared ray transmission and coding circuits (Motorola MC14497 integrated circuit). Number 2 is an infrared ray receiver circuit comprising an amplifier (Motorola TBA 2110 integrated circuit) whose output is connected to control unit 3 comprising a Fairchild 3872 microcomputer.

The control unit is also connected to:

a random access CMOS memory (RAM) 7 consisting of (512) 8-bit cells and made using two RCA MW5113 512*4 RAM memories;

a PLL frequency synthesis circuit 8 for direct channel tuning consisting of a Motorola UAA 2000 integrated circuit;

a character generating circuit 4 for displaying 64 types of alphanumeric characters on the screen with a 5×7 dot matrix arranged in 8 lines of 32 characters;

the "AV" terminal of a known time constant switch circuit for the line sync circuits on the receiver.

The character generating circuit has three outputs (R', G', B') connected to inputs R, G and B respectively on final video circuit 5. The latter also receives at inputs R, G and B the three red, green and blue color signals sent out from the brightness and color circuits on the set and has three outputs connected to the cathodes of color kinescope 6.

More detailed information about the integrated and associated operating circuits mentioned above and later on can be found in the maker's specifications and catalogues which are readily available on the market.

Operation of the circuit is as follows:

Remote-control transmitter 1 consists of:

a first set of 32 dual-function buttons, the first or second function being selected by means of a shift key. The first set of functions includes the letters of the alphabet and the second the arabic numbers or punctuation marks.

three keys, TAC, CAL and DSP, for selecting the required function: scratch pad, calendar or return to normal receiver function control.

eight control keys for compiling the scratch pad message.

an OFF key for switching the set off.

When any one of these 44 keys is pressed, the MC 14497 integrated circuit transmits a special signal in two-phase FSK code, i.e. a series signal consisting of

two packs of two given frequencies for each bit in the number of the key that has been pressed.

Receiver-amplifier circuit 2 then amplifies and demodulates the received signal into a timed sequence of ones and zeroes. Whenever a key is released, integrated circuit MC 14497 automatically transmits an end-of-transmission code corresponding to control 63.

Control unit 3 decodes the timed sequence into the corresponding code of the key that has been pressed.

When one of the TAC, CAL or DSP function keys is pressed, the control unit switches to the corresponding operating mode as described later on with reference to FIG. 3.

If the TAC key is pressed, the control unit calls up data (scratch pad message) from memory circuits 7 and sends it to character generating circuit 4 for display on the screen, after which it prepares to receive further instructions from the transmitter which it stores in RAM 7 for forming a new message.

More details will be given about this when FIGS. 4-6 and Tables 1 and 2 are discussed.

If the CAL button is pressed, the control unit sends character generator 4 the following message:

"CALENDAR OF ??/???"

and prepares to receive the number of the month (January=01, December=12) and calendar year in question. Once this data has been supplied, the control unit calculates the date of the first day in the month requested, draws up a seven-column table of four or five lines showing all the days in the month and sends it to character generator 4. The calendar displayed on the screen may look like this:

DECEMBER 1980						
MO	TU	WE	TH	FR	SA	SU
1	2	3	4	5	6	7
8	9	10	11	12	13	14
15	16	17	18	19	20	21
22	23	24	25	26	27	28
29	30	31				

The month and year (December 1980) are displayed in red, the days of the week, (MO, TU, WE, TH, FR, SA) in magenta, the numbers usually in white and "SU" and public holiday numbers (7, 14, 21, 28, 25) in red.

More details about this will be given later when FIGS. 8, 9 and 10 and Tables 3, 4 and 5 are discussed.

If the DSP button is pressed, the control unit prepares for ordinary television functions (channel/program selection, level adjustments, memorization, etc.).

In the case of program selection, for example, the control unit calls up tuning data relative to the selected program number from RAM 7, calculates the dividing number, which it sends in code to PLL circuit 8 for tuning into the required channel, and sends the data to be displayed (selected program/channel number, etc.) to character generator 4. For certain programs, it also supplies terminal "AV" with a time constant switch signal.

The way some of these functions are controlled by the present invention will be described in more detail when FIGS. 11-14 and Tables 6-9 are discussed particularly as regards memory labels for identifying priority stations. The non-volatile RAM 7 or, as in the case described, the low-consumption CMOS memory, with

a buffer battery for preserving data even in the event of power failure, is used for storing both scratch pad and favorite program data in specific separate areas. Scratch pad data is stored in $32 \times 8 = 256$ cells, i.e. the first half of the memory, and program data in $8 \times 10 \times 3 = 240$ cells (8 data per program on three 10 program pages) in the second half of the memory.

Besides the external RAM 7, the control unit microcomputer contains a block of registers (SPAD), consisting of (64) 8-bit registers, and a RAM memory area (BUFFER), consisting of 64 RAM memory cells ranging between the "FCO" and "FFF" addresses in hexadecimal notation.

Operation of character generator 4, connected to kinescope 6 via final video amplifier circuit 5, will now be described with reference to FIG. 2.

"DATA" indicates six input terminals representing the ASCII code of the 64 symbols which may be displayed.

"COLOUR" indicates two terminals representing the particular color assigned to each character (00=RED, 10= YELLOW, 01=MAGENTA, 11=WHITE).

"ADD" indicates three terminals representing the selected print line number (0-7 on an 8-line display).

"DT" indicates a terminal for enabling data transmission to the character generating circuit.

"DC" indicates a clock terminal for moving the character forward on a given line.

"FH" and "FV" indicate two sync terminals, for the horizontal and the vertical frequency, depending on the scanning of the set.

"R', G', B'" indicate three output terminals for supplying red, green and blue display picture data which is amplified and then sent to the kinescope.

The character generating 4 circuit essentially consists of a Fairchild 3258 integrated circuit for generating a 64-character display matrix, a Fairchild 3539 256×8 RAM memory, a clock generator consisting of Fairchild IO10 (74LS02) and IC9 (74LS163) integrated circuits and character and line counters, for supplying addresses to the memory circuit, consisting of Fairchild IO2 (4024) and IC4 (4029) integrated circuits with the auxiliary circuits and connections shown in FIG. 2.

Operation of the circuit is as follows:

For printing on a given line, the line number must first be supplied to the "ADD" terminals so as to set the line counter to the required value. A signal is then sent to the "DT" terminal for setting the memory to print mode, followed by the display character and clock pulse which are sent respectively to the "DATA" and "COLOUR" and "DC" terminals.

The entered data is thus stored in successive memory cells in the area set aside for the selected line.

The above operation is repeated in the case of multiple lines and, once all the data has been loaded, the characters stored in the memory are displayed by removing the signal on the "DT" terminal.

This causes the cells in RAM 7 to be scanned, in time with the vertical- and horizontal-frequency signals on the set, the content of which (6 bits corresponding to the ASCII code of the character in question) is sent to the input of character generator integrated circuit 3258. This then sends out five signals, corresponding to the five picture elements making up a line on the 5×7 character matrix, which are converted into a series signal by the parallel-series converter, consisting of a Fairchild IC8 (74LS165) integrated circuit, which is then sent to

one or more of outputs R', G', B' depending on the two color bits.

The character generating circuit 4 has another two input terminals ("CS" and "OFF")—one for print enabling the character generator RAM memory and the other for disabling any printing on the screen—both connected to appropriate outputs on the microcomputer control unit.

Operation of the latter is shown in the block diagrams of its basic functions.

FIG. 3 shows reading and decoding of the controls received from amplifier 2 in FIG. 1 and function selection. Number 1 in FIG. 3 indicates an initialization block which, when activated by an "ON" signal, assigns specific initial values to the registers and TIMER and arranged for the "receiver control" function.

The initialization block activates the next block (2) which reads the input signal from amplifier 2 in FIG. 1 and, in turn, activates block 3, which checks whether the signal is 0.

The "YES" output of block 3 activates block 4, which checks whether the "DAT" register contains a preset "CROT" value. The "NO" output of block 4 supplies the signal for activating block 2 while the "YES" output activates block 5, which, after a set pause, supplies a "CALEN" signal for activating the blocks in FIG. 9.

The "NO" output of block 3 activates the next block (6), which checks whether the input signal contains a START BIT. The "NO" output supplies a signal for activating block 2 while the "YES" output activates in turn:

block 7 which reads the series signal received from amplifier 2 in FIG. 1;

block 8 which converts the read data into a binary number and stores it in the "DAT" register;

block 9 which detects the presence of an end-of-transmission "EOT" signal.

The "NO" output of block 9 supplies a signal for activating block 2 while the "YES" output activates block 10, which checks whether the "DAT" register contains a set of "FUNCTION" (>50) values. The "YES" output activates block 11, which arranges for the new function and stores the contents of the "DAT" register in the "FUNCTION" register, while the "NO" output of block 10 and the output of block 11 activate in turn:

block 12 which checks whether the "FUNCTION" register contains a prearranged "CAL" value corresponding to the code of the calendar key on keyboard 1 in FIG. 2;

block 13 which checks whether the "FUNCTION" register contains a prearranged "TAC" value corresponding to the code of the scratch pad key on keyboard 1 in FIG. 2.

The "YES" output of block 12 supplies a "CALE" signal for activating the blocks described later in FIG. 8. The "YES" output of block 13 supplies a "TACC" (scratch pad) signal for activating the blocks described later in FIG. 4, while the "NO" output supplies a "STAR" signal for activating the television function control blocks described later in FIG. 11. FIG. 4 shows block diagrams of the basic "TACC" logic functions performed by the control unit.

The "TACC" signal received from block 13 in FIG. 3 activates block 20, which checks whether the "DAT" register contains a prearranged "TAC" value (i.e.

whether the scratch pad function key has just been pressed on keyboard 1 in FIG. 1).

The "YES" output (first time) activates in turn:

block 21 which zeroes the shift mode (sets the keys in the first character group, i.e. letters of the alpha-
bet);

block 22 which supplies character generator 4 in FIG. 1 with the data stored in RAM 7 corresponding to the last seven lines of characters forming the scratch pad message;

block 23 which supplies the character generating circuit with first line data and positions the "pointer" character in the first top left-hand position on the screen.

Block 23 then supplies an enabling (LOOP) control to block 2 in FIG. 3. The "NO" output of block 20 activates block 24, which checks whether the "DAT" register contains a prearranged "RAND" value, while the "YES" output of block 24 activates in turn:

block 26, which sets a pointer at the start of the message in the form of a set of codes stored in the ROM memory of the microprocessor;

block 27 which checks for an F signal.

The "YES" output of block 27 then activates block 31, which clears the F signal, and block 32, which sends the ROM code sequence to the character generating circuit.

The "NO" output of block 27 activates in turn:

block 28 which generates the F signal;

block 29 which generates all the codes representing all the characters that can be generated by the character generating circuit;

block 30 which sends the generated codes to the character generating circuit.

Blocks 30 and 32 supply the enabling signal to block 2 in FIG. 3.

The "NO" output of block 24 activates block 25, which, depending on the line number ("ADD" register) and pointer position ("CRT" register), sets the pointer to a particular cell in RAM memory 7 in FIG. 1.

Block 25 activates block 33, which checks whether the content of the "DAT" register belongs to the group of control function values (>32). The "NO" output (data for display) activates in turn:

block 34, which adds a shift function bit and two color function bits to the content of the "DAT" register and stores the new data in the RAM memory;

block 35, which alters the content of the "CRT" (pointer position) register;

block 36, which checks whether the position of the pointer corresponds to the end of a line.

The "YES" output of block 36 activates in turn block 37, which sends all the line data to the character generating circuit, and block 38, which alters the content of the "ADD" (line pointer) register.

The "NO" output of block 36 and block 38 activate block 39, which sends the new line data to the character generating circuit and an enabling signal to block 2 in FIG. 3.

The "YES" output of block 33 activates in turn:

block 40, which checks whether the "DAT" register contains a prearranged "RETURN" value (new line key clearing all the remaining characters on the present line);

block 41, which checks whether the "DAT" register contains a "SHIFT" value (key for selecting first

or second case for the first 32 keys on the keyboard);

block 42, which checks whether the "DAT" register contains a "PFOR" value (pointer forward shift key);

block 43, which checks whether the "DAT" register contains a "PBACK" value (pointer backward shift key);

block 44, which checks whether the "DAT" register contains a "PDOWN" value (key for shifting the pointer to the start of the next line);

block 45, which checks whether the "DAT" register contains a "CLEAR" value (key for clearing the page starting from the present position);

block 46, which alters the data (0-3) in the color register.

The "YES" outputs of blocks 40-45 supply signals RET, SHI, PF, PB, PD and CL respectively for enabling the next blocks in FIGS. 5-7.

Block 46 supplies the activating signal to block 39.

FIG. 5 shows the reading of a line in RAM memory 7 of FIG. 1 and transmission to the character generating circuit, i.e. operation of FIG. 4 blocks, such as 22, 23, 37 and 39, in greater detail. Number 50 in FIG. 5 indicates a block which, depending on the present line number in the "ADD" register, initializes a pointer register at a given cell in RAM memory 7 in FIG. 1.

The block 50 activates in turn:

block 51, which enables the RAM memory for reading;

block 52, which reads data from the RAM memory;

block 53, which checks whether the position of the character that has just been read tallies with the position of the pointer.

The "YES" output of block 53 activates block 54, which substitutes the read data with a selected pointer character code ("-"=31) and adds the color and shift bits.

The "NO" output of block 53 and the output of block 54 activate in turn:

block 55, which copies the data into a memory BUFFER inside the microprocessor control unit;

block 56, which checks whether the read data is the last of a print line.

The "NO" output of block 56 supplies an enabling signal to block 52, while the "YES" output enables block 57, which waits for a vertical-frequency sync pulse, after which it supplies an enabling signal to block 58, which transfers the line data stored in the BUFFER to the character generating circuit.

FIGS. 6 and 7 show block diagrams of the elementary functions performed by the microcomputer control unit for controlling composition of the printed text. FIG. 6 shows the page clearing functions and pointer shift with or without clearing and FIG. 7 the shift function and pointer shift to the right or left.

The "RET" or "CL" signal in FIG. 6, supplied by blocks 40 and 45 in FIG. 4, activates in turn:

block 60, which sends the "BLANK" character code to RAM memory 7 in FIG. 1;

block 61, which modifies pointer position counter "CRT";

block 62, which checks whether the position corresponds with the end of a line.

The "NO" output of block 62 supplies an enabling signal to block 60, while the "YES" output supplies an enabling signal to block 63, which checks whether the "DAT" register contains a preset "CLEAR" value

(clear key); the "YES" output activates block 64, which modifies the pointer registers to indicate the start of the next line and activates block 67, which checks whether the end of the last line has been reached; the "YES" output supplies signal TC1 to block 21 in FIG. 4, while the "NO" output supplies an enabling signal to block 60. The "NO" output activates in turn:

block 65, which transmits a line of data to the character generating circuit;

block 66, which points to the start of the next line and supplies an enabling signal to block 2 in FIG. 3 (await new data).

The "PF" signal in FIG. 7 from block 42 in FIG. 4 activates in turn:

block 70, which decreases the "CRT" register (one place forward pointer shift);

block 71, which transmits a line of characters to the character generating circuit;

block 72, which checks whether the pointer is positioned at the end of a line.

The "YES" output of block 72 activates block 73, which sets the pointers at the start of the next line, and block 74, which transmits a line of characters to the character generating circuit. The "NO" output of block 72 and block 74 supply an enabling signal to block 2 in FIG. 3. The "SHI" output from block 41 in FIG. 4 activates block 75, which modifies the "SHIFT" function bit (first or second function group selection on the keyboard) and supplies an enabling signal to block 74. The "PB" signal from block 43 in FIG. 4 activates block 76, which increases the content of counter "CRT" (pointer one place back shift), and block 77, which checks whether the pointer was positioned at the start of a line. The "NO" output activates block 74, while the "YES" output activates, in turn, block 78, which transmits a line of characters to the character generating circuit, and block 79, which sets the pointers at the end of the previous line.

The output of block 79 supplies an enabling signal to block 74.

To give a clearer description, the following is a summary of the operating features of the blocks mentioned above. When the "TAC" function key is pressed, the complete message recorded beforehand in the RAM appears on the screen. At the same time, the control unit is set for compiling a new message or altering or completing the existing one. The pointer character "-" in the top left-hand corner indicates where any newly entered character will be inserted. The user may cancel the message entirely ("CLEAR" key) or shift the pointer as required for compiling the message using the pointer shift keys (back, forward, new line, etc.). The "SHIFT" key provides for inserting letters or numbers and punctuation marks. When operated, the pointer character changes to inform the user, by means of a visual aid, which group of characters has been selected ("- for letters, "^ for numbers). The pointer also changes color whenever the "COL" key is pressed (white, red, yellow, magenta) to remind the user which color has been selected for display. Each character entered is automatically stored in the memory. Furthermore, whenever a key is operated (characters, pointer shift, etc.), the content of the present line is transmitted to the character generator. Transmitting a whole line each time is the best compromise between transmission speed and the number of connections required and also guarantees constant character alignment.

Furthermore, transmission is synchronous with vertical return so as to avoid any visible interference on the screen. The scratch pad function also includes two fixed messages, generated by the control unit regardless of the message compiled by the user.

Both are called up alternately whenever the "PRG" key is operated. The first fixed message concerns the more common receiver operating instructions and consists of a full-page message stored in the ROM, as opposed to the RAM, on the microcomputer during masking. The second corresponds to the entire group of display characters produced by the microcomputer unit (all 256 possible 8-bit data values displayed by the character generating circuit in four groups of 64 characters in four colors over eight lines) which serves both as a memo for the user and for making a fast check of correct circuit operating during stop testing.

In the example shown, a special meaning has been assigned to the last line in the scratch pad, which may be used for memorizing special dates, such as birthdays, anniversaries, appointments, etc.

This is usually displayed and may be compiled and altered in the same way as the other lines in the pad.

Furthermore, if the dates are represented by:

NN/MM

or by two figures indicating the number of the day followed by "/" and the number of the month, they are automatically recognized and shown whenever the calendar of a particular month is called up. However, this will be described in more detail when FIG. 10 is discussed.

Operation of the above blocks is illustrated more clearly in Tables 1 and 2 which show, in hexadecimal form, the internal connections of each cell in the ROM memory on microcomputer integrated circuit 3872, which constitutes the cell control unit.

Table 1 shows the blocks in FIG. 3 for reading and decoding the controls received from the remote control and selecting the functions to be performed.

Table 2 shows the blocks in FIGS. 4-7 for performing the "SCRATCH PAD" function, i.e. displaying a message stored beforehand in the RAM memory and compiling and storing a new message.

TABLE 1

ADDRESS	CODE						
M0000 =	1A	70	B4	62	5C	52	2A
M0008 =	0F	C0	20	E0	17	71	17
M0010 =	58	20	F0	17	38	94	FD
M0018 =	10	B1	6F	5C	65	6D	5C
M0020 =	AA	B6	2A	0F	FF	20	34
M0028 =	20	3C	53	43	25	3C	84
M0030 =	20	A0	67	6F	5E	5D	28
M0038 =	D7	94	19	2A	0F	FF	16
M0040 =	33	94	E9	43	25	2B	94
M0048 =	1A	3C	94	EB	4E	3D	94
M0050 =	29	02	B8	20	BB	B7	28
M0058 =	D7	94	FC	1A	A7	91	D8
M0060 =	5A	20	3F	0B	70	5E	5C
M0068 =	20	A0	B7	28	00	D7	4B
M0070 =	84	FA	4B	59	70	CB	84
M0078 =	4A	CC	5C	4A	13	5A	84
M0080 =	25	10	94	0B	0A	25	3F
M0088 =	0E	90	04	71	5A	4D	A7
M0090 =	D8	20	FF	B7	90	DF	20
M0098 =	0B	70	59	71	5A	25	10
M00A0 =	05	4D	4C	15	5C	4C	12
M00A8 =	FA	C9	59	4A	13	5A	81
M00B0 =	49	25	3E	84	05	53	29
M00B8 =	30	43	25	31	81	05	2A
M00C0 =	FF	17	2A	0F	FF	16	25

TABLE 1-continued

ADDRESS	CODE							
M00C8 =	84	06	92	07	29	01	3B	29
M00D0 =	00	DF	43	52	29	09	1C	70
M00D8 =	B0	A0	18	21	01	5B	1C	

TABLE 2

ADDRESS	CODE							
M0138 =			43	25	32	84	4A	
M0140 =	25	30	84	6C	70	C8	84	05
M0148 =	25	30	94	3E	45	15	13	C2
M0150 =	18	07	43	25	20	81	50	25
M0158 =	2E	84	1B	25	2F	84	2D	25
M0160 =	2A	84	42	25	29	84	2B	25
M0168 =	2B	84	3E	25	2D	84	07	40
M0170 =	24	40	50	90	1B	20	20	59
M0178 =	28	02	A6	32	81	F8	43	25
M0180 =	2D	94	26	35	20	1F	52	81
M0188 =	ED	90	51	48	23	30	58	90
M0190 =	65	42	24	02	25	1F	81	0C
M0198 =	70	52	28	02	5B	45	1F	21
M01A0 =	07	55	72	52	90	5D	90	50
M01A8 =	70	52	28	02	5B	90	5A	38
M01B0 =	77	55	70	52	2A	05	7F	48
M01B8 =	21	01	94	15	20	1E	59	20
M01C0 =	20	2A	0F	DF	17	17	42	17
M01C8 =	1F	52	39	94	FA	2A	0F	DF
M01D0 =	20	20	59	28	02	8F	35	81
M01D8 =	DF	90	37	70	58	52	07	20
M01E0 =	20	59	28	02	A6	76	55	28
M01E8 =	02	5B	35	81	FB	20	C0	50
M01F0 =	20	1E	52	77	55	90	18	43
M01F8 =	25	20	84	03	C0	E8	59	28
M0200 =	02	A6	32	94	0A	28	02	5B
M0208 =	20	1E	52	35	91	E6	28	02
M0210 =	5B	29	00	2B	07	12	E0	E0
M0218 =	C3	C1	CC	C5	CE	C4	C1	D2
M0220 =	C9	CF	E0	C4	C5	CC	FA	E0
M0228 =	07	08	16	59	70	55	22	10
M0230 =	B1	28	02	4F	94	FC	16	59
M0238 =	0F	28	02	4F	94	FC	2A	02
M0240 =	14	16	59	20	20	18	B4	28
M0248 =	02	52	94	F8	70	B1	0C	16
M0250 =	18	B4	45	22	18	B1	23	08
M0258 =	B1	39	1C	2A	0F	DF	20	20
M0260 =	59	45	18	15	13	1F	07	20
M0268 =	27	B1	20	20	90	1B	49	25
M0270 =	1F	84	F8	03	B5	1F	07	70
M0278 =	B4	A4	64	6F	5C	49	E2	4C
M0280 =	94	07	48	14	12	C0	24	1E
M0288 =	17	39	94	E3	2A	0F	DF	08
M0290 =	77	B1	A0	21	10	94	FC	20
M0298 =	20	59	45	22	10	B1	28	02
M02A0 =	4F	94	FC	77	B1	0C	A1	22
M02A8 =	20	B1	03	B5	1F	07	49	B4
M02B0 =	A1	23	08	B1	23	28	B1	1C

FIG. 8 shows data entry (month and year) for the calender call-up function.

The "CALE" signal from block 12 in FIG. 3 activates block 80, which checks whether the "TAS" register contains a preset "CAL" value (i.e. whether the calender function button has just been operated). The "NO" output activates, in turn, block 81, which stores the operated key code in a cell in the RAM memory buffer inside the microprocessor, and block 82, which alters the content of a digit count register. The "YES" output of block 80 activates, in turn, block 83, which assigns an initial value to said digit count register, and block 84, which stores the "??/???" character codes in the memory buffer.

Blocks 82 and 84 both activate block 85, which assigns initial values to pointer registers for locating a given cell in the ROM memory and the initial cell in the memory buffer;

block 86, which takes the character line data from the ROM memory and buffer and transmits it to the character generating circuit;

block 87, which checks whether the data entered is the last figure in the number of the year.

The "YES" output of block 87 supplies a "CALEN" signal to the blocks described later in connection with FIG. 9. The "NO" output supplies a signal for activating block 2 in FIG. 3 (await new data). FIG. 9 shows how Easter and the calender of a given month are calculated for the set year.

The "CALEN" signal from block 87 in FIG. 8 activates block 90, which checks whether the set month number (1-12) is acceptable: the "YES" output activates block 91, which checks whether the century number falls within a given range (16-24), while the "NO" output of blocks 90 and 91 activate in turn:

block 92, which assigns limit numbers 1 or 12 to the number of the month and 1600 or 2499 to the number of the year;

block 93, which supplies an error signal.

The "YES" output of block 91 and the output of block 93 activate in turn:

block 94, which converts the month number into a binary value and stores it in the "MES" register;

block 95, which, starting from the year and century number, calculates the date of Easter Sunday using the known Gauss formula and stores it in the "TE1" register;

block 96, which, starting from the date of Easter Sunday, calculates the first day in the required month (1=Monday, 7=Sunday) and stores it in a provisional register "R(A)";

block 97, which checks whether the number of the month read by the RAM memory tallies with that of the requested month.

The "YES" output of block 97 (indicating that the requested month is among the dates to be remembered) activates block 98, which stores the number of the day to be remembered in a "SPAD" register.

Block 98 and the "NO" output of block 97 activate block 99, which checks whether the data to be remembered is the last one in the RAM memory.

The "NO" output of block 99 activates block 97 again, while the "YES" output supplies a "DSP" signal to the next blocks in FIG. 10.

FIG. 10 shows block diagrams of elementary logic functions performed by the control unit for displaying a calender page. The "DSP" signal from block 99 in FIG. 9 activates block 100, which sets the color yellow and activates block 101, which checks whether it is the first line. The "YES" output of block 101 (line containing the name of the month and the year) activates in turn:

block 102, which points to the name of the month in the ROM;

block 103, which reads the length of the month and any holidays from the ROM and stores them in the TE1 register;

block 104, which sends the month name codes to the character generating circuit;

block 105, which sends three blank codes to the character generating circuit;

block 106, which sends the year number codes from the memory buffer to the character generating circuit.

The output of block 106 supplies a signal for activating block 101 the "NO" output of which activates block 107, which checks whether it is the second line.

13

The "YES" output of block 107 (line containing abbreviations of the days of the week: MO, TU, WE, TH, FR, SA, SU) activates block 108, which sets the color magenta, and block 109, which checks whether it is the last column. The "YES" output (Sundays) activates block 110, which sets the color red, while the "NO" output and the output of block 110 activate, in turn, block 111, which sends two data from the ROM and two blanks to the character generating circuit, and block 112, which checks whether it is the end of a line.

The "NO" output of block 112 supplies an enabling signal to block 109, while the "YES" output activates in turn:

block 126, which enables the character generating circuit for display;

block 127, which modifies the line number counter;

block 128, which checks whether it was the last line.

The "NO" output of block 128 (incomplete calendar page) supplies a signal for activating block 101, while the "YES" output (complete page; increment month and year for rotating calendar) activates block 129, which checks whether the number of the month is 12. The "NO" output activates block 131, which increments the number of the month, while the "YES" output activates block 130, which assigns a 1 to the number of the month and increments the number of the year.

The outputs of blocks 130 and 131 supply a signal for activating block 2 in FIG. 3 (end of calendar, await new instructions; if the "CROT" key has been pressed, after a certain length of time, the "CALEN" signal is generated again and the next month's calendar is displayed on the screen).

The "NO" output of block 107 activates in turn:

block 113, which sends four blanks to the character generating circuit;

block 114, which decreases the content of the first day of the week register R(A);

block 115, which checks whether the content of the R(A) register is zero.

The "NO" output of block 115 supplies an enabling signal to block 113, while the "YES" output activates in turn:

block 116, which sets the pointer at the beginning of a number table in the ROM;

block 117, which stores the date and information indicating a possible holiday in the "DAT" register and sets the color white;

block 118, which checks whether the day is one of the dates to be remembered in the "SPAD" register.

The "YES" output of block 118 (day=date to be remembered) activates block 119, which sets the color yellow, while the "NO" output activates block 120, which checks whether the day in question is a holiday.

The "NO" output of block 120 activates block 121, which sets the color red.

Blocks 119 and 121 and the "NO" output of block 120 activate, in turn, block 122, which sends "DATA" relative to the day of the month and two blanks of the character generating circuit, and block 123, which checks whether the date corresponds with the length of the month.

The "YES" output of block 123 activates block 124, which assigns the "DATA" a blank code (to fill in with blanks after the last day of the month).

Block 124 and the "NO" output of block 123 activate block 125, which checks whether it is the end of a line.

14

The "NO" output activates block 117, while the "YES" output activates block 126.

Operation of the above blocks will become clearer from Tables 3-5.

5 Table 3 shows the blocks in FIG. 3 relative to the calendar data entry function.

Table 4 shows the blocks in FIG. 9 for calculating Easter Sunday and the first day of the month requested, as well as examining the dates to be remembered.

10 Table 5 shows the blocks in FIG. 5 for transmitting data to the character generating circuit for displaying a calendar page in different colors.

TABLE 3

ADDRESS	CODE								
M00D8									66
M00E0 =	43	25	33	94	22	6D	20		80
M00E8 =	58	2A	0F	DF	77	59	20		3F
M00F0 =	22	40	17	39	94	FD	2A		0F
M00F8 =	E1	20	2F	22	40	17	70		52
M0100 =	2A	0F	DF	0E	90	22	40		0B
M0108 =	0F	42	25	02	94	02	1F		8E
M0110 =	1F	52	43	22	30	22	40		17
M0118 =	C8	91	09	21	0F	CC	5D		20
M0120 =	80	90	04	15	5C	70	58		2A
M0128 =	02	15	28	02	29	0A	50		24
M0130 =	F8	21	07	94	04	29	02		B8
M0138 =	29	00	2B						

TABLE 4

ADDRESS	CODE								
M02B8 =	90	17	71	90	10	20	12		90
M02C0 =	0C	20	24	5D	20	99	90		05
M02C8 =	20	16	5D	70	5C	28	05		00
M02D0 =	66	6D	4C	25	00	82	E4		25
M02D8 =	12	92	E3	4D	4C	25	24		92
M02E0 =	E1	25	15	82	E4	6C	4D		4C
M02E8 =	21	0F	58	4E	14	13	59		13
M02F0 =	13	C9	C8	58	4E	4E	48		5D
M02F8 =	4D	4D	8F	EB	2A	05	9B		6A
M0300 =	4D	5A	4C	8E	13	13	CD		CC
M0308 =	24	ED	82	FD	24	13	67		6A
M0310 =	5C	20	13	59	16	CC	25		1D
M0318 =	82	03	24	E2	39	94	F7		69
M0320 =	5C	13	CC	58	66	6C	4C		21
M0328 =	03	C8	58	4E	CC	CC	24		F9
M0330 =	82	FD	24	OA	13	C8	13		58
M0338 =	4C	12	12	18	CC	C8	24		F9
M0340 =	82	FD	24	07	67	68	5C		24
M0348 =	16	69	CC	58	59	25	1E		81
M0350 =	1D	24	E1	59	25	19	91		0F
M0358 =	94	11	68	4C	25	06	94		0B
M0360 =	6A	4C	25	0A	81	05	49		24
M0368 =	F9	59	74	90	02	73	EA		70
M0370 =	5B	94	08	20	67	DB	5B		39
M0378 =	81	FA	2A	05	B3	4A	8E		48
M0380 =	18	24	3C	88	58	70	59		66
M0388 =	6C	4C	21	03	94	12	CE		94
M0390 =	06	4C	21	03	94	0A	4E		4C
M0398 =	25	02	91	04	38	71	59		6C
M03A0 =	67	48	24	F9	81	FD	24		07
M03A8 =	13	13	5C	70	55	65	6F		5E
M03B0 =	8F	FE	28	02	5B	2A	0F		E1
M03B8 =	0E	03	24	00	81	2F	16		21
M03C0 =	3F	25	2F	94	F4	16	21		0F
M03C8 =	13	5C	13	13	CC	5C	16		21
M03D0 =	0F	CC	18	1F	CA	94	E2		20
M03D8 =	FB	8E	16	21	0F	13	5C		13
M03E0 =	13	CC	5C	16	21	0F	CC		5D
M03E8 =	73	8E	90	CD					
M0528 =				D3	47	45	4E		4E
M0530 =	06	80	46	45	42	42	52		41
M0538 =	49	4F	83	4D	41	52	5A		4F
M0540 =	82	41	50	52	49	4C	45		D3
M0548 =	4D	41	47	47	49	4F	82		47
M0550 =	49	55	47	4E	4F	83	4C		55
M0558 =	47	4C	49	4F	B3	41	47		4F
M0560 =	53	54	4F	82	53	45	54		54

TABLE 4-continued

ADDRESS	CODE							
M0568 =	0F	83	4F	54	54	4F	0B	D2
M0570 =	4E	4F	56	04	C3	44	49	43
M0578 =	45	4D	42	52	45	80	4C	55
M0580 =	4D	41	4D	45	47	49	56	45
M0588 =	53	41	44	4F	71	F2	F3	F4
M0590 =	F5	F6	F7	78	F9	90	91	92
M0598 =	93	94	15	96	97	98	99	A0
M05A0 =	A1	A2	A3	A4	25	26	A7	A8
M05A8 =	A9	B0	B1	16	17	17	18	18
M05B0 =	18	19	1A	19	01	04	04	00
M05B8 =	02	05	00	03	06	01	04	06

TABLE 5

ADDRESS	CODE							
M03E8 =				20	40	50	77	
M03F0 =	55	B1	2A	05	2B	45	22	10
M03F8 =	B1	20	1F	52	49	25	02	84
M0400 =	70	28	05	1C	42	25	1B	91
M0408 =	F9	45	25	07	84	25	25	05
M0410 =	94	06	6C	67	3C	81	EB	16
M0418 =	56	45	25	06	42	94	54	25
M0420 =	04	20	80	91	03	20	00	50
M0428 =	28	05	16	16	56	28	05	16
M0430 =	90	7D	42	25	16	91	CB	70
M0438 =	88	81	FD	3A	94	FA	5A	21
M0440 =	0F	94	02	C9	59	20	8E	D9
M0448 =	59	16	25	1F	81	06	56	28
M0450 =	05	16	70	8E	70	88	81	F3
M0458 =	28	05	1C	42	25	0A	91	F9
M0460 =	6E	66	4D	58	28	05	01	4E
M0468 =	58	2A	05	7E	90	73	90	86
M0470 =	90	72	25	04	81	32	46	21
M0478 =	7F	25	70	82	03	21	0F	EB
M0480 =	84	26	46	21	1F	65	68	EE
M0488 =	84	05	8F	FC	90	05	20	40
M0490 =	90	3D	70	C6	91	37	4A	14
M0498 =	21	07	E5	84	1D	4A	25	C3
M04A0 =	94	2B	45	25	02	91	26	20
M04A8 =	00	90	24	28	05	01	28	05
M04B0 =	1C	28	05	1C	91	33	29	04
M04B8 =	17	6D	66	4D	25	05	94	E8
M04C0 =	4D	25	18	92	E3	94	06	4E
M04C8 =	25	89	92	DC	20	C0	50	46
M04D0 =	22	80	56	21	40	46	94	03
M04D8 =	21	7F	58	E9	94	CE	72	59
M04E0 =	28	05	01	28	05	1C	81	FC
M04E8 =	77	B1	35	81	82	6D	66	4C
M04F0 =	25	12	94	04	71	5D	4D	20
M0458 =	67	DC	5E	84	FB	29	00	2B
M0500 =	1C	08	48	14	25	0F	94	02
M0508 =	15	24	30	56	28	05	16	48
M0510 =	21	0F	24	30	56	09	46	21
M0518 =	3F	C0	90	05	20	20	56	46
M0520 =	18	B4	45	22	18	B1	23	08
M0528 =	B1	32	1C					

Operation of the microcomputer control unit in connection with receiver functions is shown more clearly in the block diagrams in FIGS. 11-14.

FIG. 11 shows operation mode selection (favorite program selection, etc.), "SHIFT" and memory page switch functions, return to normal television operation and memorization of program-associated station labels.

The "STAR" signal in FIG. 11 from block 13 in FIG. 3 activates block 130, which checks whether the operated key corresponds to a preset "DSP" code (return to normal operation of the set). The "YES" output of block 130 activates block 150, which checks whether, instead of the key number, the buffer contains the "?" code.

The "NO" output of block 150 activates, in turn, block 152, which checks whether, instead of the label, the buffer contains a "?", and block 153, which checks

whether, instead of the channel number, the buffer contains a "?".

The "YES" output of block 150 activates block 151, which recovers the key number from one of the internal SPAD registers.

The "YES" output of block 152 activates block 154, which clears the label in the buffer. The "YES" output of block 153 activates block 155, which recovers the channel number from the SPAD.

The outputs of blocks 151 and 154 and the "NO" output of block 153 activate block 156, which checks whether the key number is between 0 and 9. The "YES" output supplies an "INDIR" signal to the blocks in FIG. 13, while the "NO" output and the output of block 155 supply a "DIRET" signal to the next receiver blocks for selecting a station in the usual way on the basis of a given transmission standard channel number.

The "NO" output of block 130 activates block 131, which checks whether the operated key corresponds to a given "SHIFT" code. The "YES" output of block 131 activates block 133, which checks whether the "SHIFT" function bit is 1: the "YES" output activates block 134, which zeroes the bit, while the "NO" output activates block 135, which sets the bit to 1. Blocks 134 and 135 supply a signal for activating block 163, which transmits the words "CHANNEL" and "KEY" to the character generating circuit together with the memory page, channel and program numbers and a label if there is one. A typical display in this case is:

P3
CHANNEL 42
KEY 6 GRP

The "NO" output of block 131 activates block 132, which checks whether the operated key corresponds to a given "PAG" code. The "YES" output activates, in turn, block 136, which increments the page number within a 1-3 range, block 137, which stores the page number in the buffer, and display block 163. The "NO" output activates block 138, which checks whether the operated key corresponds to a given "PRG" code. The "YES" output of block 138 activates block 139, which checks whether the operated key corresponds to a code from 11-13; the "YES" output supplies a "FINET" signal to the next blocks on the set which perform a tuning correction, while the "NO" output activates, in turn, block 140, which saves the operated key in a "MOO" mode register, and block 141, which checks whether the "MOO" register contains a preset 19 code. The "YES" output of block 141 supplies a "MEMOR" signal to the blocks in FIG. 12, while the "NO" output supplies an enable signal to block 142, which checks whether the "MOO" register contains a preset code 48. The "YES" output supplies a "PRG" signal to the blocks in FIG. 14, while the "NO" output supplies a signal to the next blocks in FIG. 13.

The "NO" output of block 138 activates, in turn, block 143, which stores the operated key in register "TE1", and block 144, which checks whether the "MOO" register contains a preset code 49 (label memorization).

The "NO" output of block 144 activates, in turn: block 145, which checks whether the "TE1" register contains 19 (memorization); block 146, which checks whether the "TE1" register is between 0 and 9;

17

block 148, which checks whether the "TE1" register is below a preset value of 48;
 block 149, which checks whether the "TE1" register is over a preset value of 29.

The "YES" output of block 146 activates block 147, which saves the operated number in the buffer and supplies an enabling signal to block 141. The "YES" outputs of blocks 145, 148 and 149 supply an enabling signal to block 139. The "NO" output of block 149 supplies a "RICER" signal to the next blocks on the set which automatically scan the memorized programs and receivable channels.

The "YES" output of block 144 activates, in turn: block 157, which converts a pointer register to the label character in the buffer;

block 158, which stores the operated key in the buffer;

block 159, which checks whether the entered data is the last (third character of the label).

The "YES" output of block 159 activates, in turn: block 160, which points to a cell in RAM memory 7 of FIG. 1 corresponding to the first character of the selected page and program label;

block 161, which stores the three label data in the next three RAM cells;

block 162, which resets the SHIFT bit and normal program call-up mode.

Block 162 supplies a signal for activating display block 163 and for generating the "LOOP" signal for awaiting new instructions.

FIG. 12 shows map display of the channels on a memory page and memorization of channel data for assigning it to a given key. The "MEMOR" signal from block 141 in FIG. 11 activates block 170, which checks whether the operated key corresponds to a preset "MEM" value (memorization button).

The "YES" output of block 170 (first time the "MEM" key is operated) activates, in turn:

block 171, which assigns an initial value of 9 to the count register and points to an initial cell in RAM 7 of FIG. 1;

block 172, which read-enables the RAM memory;

block 173, which checks whether the "MOO" register contains a preset "MEM" value.

The "NO" output of block 173 activates block 174, which reads the tuning, color, volume and brightness data from the RAM memory and stores it in four "SPAD" registers.

Block 174 and the "YES" output of block 173 activate, in turn, block 175, which reads the channel number from the RAM memory and stores it in the "RD" register, and block 176, which checks whether the read data is valid.

The "NO" output of block 176 activates block 177, which assigns a fictitious "FF" number to the channel, while the output of block 177 and the "YES" output of block 176 activate, in turn:

block 178, which initializes pointer registers at a given RAM memory and buffer cell;

block 179, which reads three label data from the RAM memory;

block 180, which checks whether the label data is valid.

The "NO" output of block 180 activates block 181, which assigns an "FF" number to the channel, while the "YES" output activates block 182, which stores the label data in the buffer.

18

Blocks 181 and 182 activate, in turn, block 183, which stores the channel number in the "SPAD", and block 184, which checks whether the key count register contains a zero. The "NO" output of block 184 supplies a signal for activating block 172, while the "YES" output supplies a signal for activating block 185, which sends the numbers of 10 channels on a given memory page to the character generating circuit for displaying the map.

A typical channel map display is:

C	21	30	42
22	35	61	??
??	??	P3	

which indicates that the third program page contains channels C, 21, 30, 42, 22, 35 and 61 associated to keys 0-6, while keys 7, 8 and 9 are unassigned.

Blocks 172 to 177 form a single block, which we shall call "READ", for reading all the program data from the RAM memory. Blocks 178-182 also form a single block, which we shall call "ETI", for reading the label data from the RAM memory. Both "READ" and "ETI" blocks will be used again later. The "NO" output of block 170 activates block 186, which checks whether the operated key corresponds to a number from 0 to 9.

The "NO" output (second time the "MEM" key has been operated) activates, in turn, block 187, which clears the previous label in the buffer, and block 188, which checks whether the channel number is valid.

The "YES" output of block 188 activates block 190, which stores a "?" in the buffer to show that the receiver is waiting for the key number to be stored, while the "NO" output activates block 189, which supplies an error signal (short sound). Blocks 189 and 190 supply an enabling signal to block 2 in FIG. 3 (await further instructions).

The "YES" output of block 186 (actual memorization of a favorite program) activates, in turn:

block 192, which stores the key number in the buffer;

block 193, which points to the first cell in the RAM memory relative to the selected key number;

block 194, which stores tuning, color, volume, brightness and channel data in five consecutive RAM cells;

block 195, which clears the data in the buffer relative to the set data display window;

block 196, which sets the SHIFT bit to 1 (letter of the alphabet setting);

block 197, which stores a label memorization code (49) in the mode register;

block 198, which stores the "???" codes in the buffer.

Block 198 supplies an enabling signal to block 163 in FIG. 11 (await three label characters) which are then stored when blocks 157-162 in FIG. 11 (PET) are activated. A typical display during label memorization is:

P3	^
CHANNEL	42
KEY	6 G??

In the example described, each label consists of three characters which may be letters of the alphabet, numbers or blanks. A special significance has been assigned, however, to labels whose first two letters are "VC", i.e. "VCR". Besides providing for memory tuning the set to

the video cassette recorder channel, these labels, which recall the video cassette recorder, cause the micro-processor control unit to activate an automatic "AV" (time constant) switch so as to provide for good picture stability in the case of signals supplied from a video cassette recorder.

This particular operating mode will be described in more detail when FIG. 13 is discussed.

The "AV" switch activating function has been assigned to all the labels beginning with the letters "VC", so that switching is performed automatically both in the case of a "VCR" label, associated with a video cassette recorder, and "VC1", "VC2", "VCX" labels, etc. for receiving a number of different stations with a switched time constant, e.g. private broadcasting stations, using commercial video cassette recorders.

FIG. 13 shows indirect program selection, i.e. tuning into the 10×3 preferred stations corresponding to each of the 10 keys on the three pages.

The "INDIR" signal from the FIG. 11 blocks activates block 200, which provides for normal display and the indirect call-up mode, and block 201, which checks whether the operated key corresponds to a number from 0 to 9.

The "YES" output of block 201 activates, in turn, block 202, which calculates the time interval between two number key operations, and block 203, which checks whether the interval is greater than a given length of time, i.e. one second. The "NO" output of block 203 (two numbers operated in less than one second) supplies a "DIRET" signal to the next blocks on the receiver for selecting the station on the basis of the channel number, while the "YES" output of block 203 and the "NO" output of block 201 activate, in turn:

block 204, which clears the channel number in the buffer;

block 205 (same as the "READ" block in FIG. 12), which reads the program data in the RAM memory;

block 206, which stores the key number in the buffer;

block 207 (same as the "ETI" block in FIG. 12), which reads the label;

block 208, which checks whether the channel number is valid.

The "NO" output of block 208 activates, in turn:

block 209, which assigns standard volume, color and brightness values;

block 210, which clears the data relative to the window for displaying the data from the keyboard;

block 211, which enters two "?" in the buffer;

block 212, which clears the label in the buffer.

The "YES" output of block 208 activates, in turn:

block 213, which stores the channel number in the buffer;

block 214, which, on the basis of the channel number, calculates the division number to be sent to the PLL circuit for exact tuning of the channel;

block 215, which checks whether the first two letters on the label are "VC".

The "YES" output of block 215 activates block 216, which activates the signal for the "AV" terminal, while the "NO" output activates block 217, which disables the "AV" terminal signal. Blocks 212, 216 and 217 activate block 163 in FIG. 11 for display and awaiting further instructions.

FIG. 14 shows selection of a station using the label associated with it.

The "PRG" signal from block 142 in FIG. 11 activates block 220, which checks whether the operated key corresponds to a preset "PRGM" code. The "YES" output (first time the "PRG" key is operated) activates, in turn:

block 221, which provides for normal display, sets the SHIFT bit to 1 (letter of the alphabet setting) and assigns an initial value to the count register;

block 222, which saves the key number in a SPAD register;

block 223, which enters "???" in the buffer;

block 224, which clears the label in the buffer.

The "NO" output of block 220 activates, in turn, block 225, which stores the key number in the buffer, and block 226, which checks whether the data entered is the last (count register=0).

Block 224 and the "NO" output of block 226 supply a signal for activating block 163 in FIG. 11 (await new data display). The "YES" output of block 226 activates, in turn:

block 227, which sets page N.3;

block 228, which sets key 9;

block 229 (same as the "ETI" block), which reads the label in the RAM;

block 230, which checks whether the read label corresponds to the one stored in the buffer.

The "YES" output of block 230 (label in the memory corresponds to the set one) activates, in turn:

block 231, which zeroes the SHIFT bit (number setting);

block 232, which stores the page number in the buffer;

block 233, which provides for the normal indirect selection mode.

Block 233 supplies a signal for activating block 200 in FIG. 13.

The "NO" output of block 230 activates, in turn, block 234, which decreases the key number, and block 235, which checks whether the key number is less than zero. The "NO" output supplies a signal for activating block 229, while the "YES" output activates, in turn, block 236, which decreases the page number, and block 237, which checks whether the page number is equal to zero.

The "NO" output of block 237 (label not yet found among the 10 stored programs) supplies a signal for activating block 238, while the "YES" output (label not in the memory) supplies a signal for activating block 221 and the next ones (new label setting).

A typical display during label channel call-up is:

P1	A
CHANNEL	54
KEY	G??

Operation of the circuits in FIGS. 11-14 will be described in more detail with reference to Tables 6-9.

To make things clearer, the following is a summary, for a number of operating modes, of the key functions on the panel and the data in the RAM memory and buffer.

The "receiver control" function is selected automatically when the set is turned on (block 1 in FIG. 3) or the "DSP" key is pressed.

A distinction must be made, however, as to whether the operating mode involves using the labels or not.

Only in the first case is the "SHI" (SHIFT) key active (for selecting the first or second case for the first 32 keys). Furthermore, the label call-up setting ("PRG" key) or call-up of the label during memorization provide for normal use of the letters which generally indicate an abbreviation of the broadcasting station. In all other cases, the SHIFT button is neglected and the keys on the keyboard assume the following functions:

0-9	Selection of one of the 10 programs stored on the current memory page, or direct selection of 99 channels by pressing two numbers in less than one second.
<e>	Tuning correction.
MEM	Memory map display and (second time pressed) memorization setting.
VOL, LUM, SAT	Volume, brightness and color saturation adjustment.
R1, R2, R3	Buttons for starting three types of memorized programme or channel scanning operations.
PAG	Page number forward key.

Programs are divided into three 10-program pages, each programme indicated by 5 data and 3 letters for the label if there is one.

The data is stored in the memory in consecutive blocks of five (program 0 page 1, program 1 page 1, . . . program 9 page 3, label 0 page 1, . . . label 9 page 3).

Operation of the above blocks is shown more clearly on the similar to those we have already seen.

Tables 6 to 9 show operation of the blocks shown in FIGS. 11 to 14 respectively, for performing the functions described in connection with these Figures.

TABLE 6

ADDRESS	CODE							
M08D0 =					2A	0F		D6
M08D8 =	20	30	17	17	17	28	08	39
M08E0 =	28	08	71	2A	0F	D6	73	5C
M08E8 =	20	31	58	7F	90	AB	28	09
M08F0 =	01	4C	25	06	94	A6	28	08
M08F8 =	39	70	57	58	2A	0F	CA	90
M0900 =	96	2A	0F	CA	16	25	F0	70
M0908 =	94	03	20	30	50	2A	0F	D3
M0910 =	65	6E	4C	8E	1F	5C	43	E0
M0918 =	24	10	17	1C	2A	0F	CA	43
M0920 =	25	34	94	35	28	0D	69	78
M0928 =	8E	7F	8D	94	16	65	6A	4C
M0930 =	90	1E	2A	0F	CD	8D	94	14
M0938 =	70	C1	81	19	21	0F	57	29
M0940 =	09	EC	2A	0F	D8	8D	94	EB
M0948 =	28	0D	71	2A	0F	D4	16	25
M0950 =	09	82	EC	41	59	29	09	DF
M0958 =	25	2F	84	33	25	2C	84	29
M0960 =	25	30	84	4C	5B	48	25	31
M0968 =	94	04	29	08	EE	25	30	84
M0970 =	1B	4B	25	13	84	3A	2A	0F
M0978 =	CB	25	09	81	24	25	17	81
M0980 =	2F	25	1D	91	2B	29	07	41
M0988 =	29	06	D1	29	08	7E	16	25
M0990 =	EE	2A	0F	CA	84	05	20	EE
M0998 =	90	03	20	F0	17	29	0C	50
M09A0 =	5B	47	56	17	4B	57	17	7F
M09A8 =	E6	84	13	70	58	90	0F	25
M09B0 =	0E	91	08	25	0B	81	04	29
M09B8 =	0B	37	58	7F	57	48	2A	0F
M09C0 =	CB	25	13	84	0E	81	26	25
M09C8 =	30	84	C1	25	16	91	1E	29
M09D0 =	06	F9	29	0A	5C			

TABLE 7

ADDRESS	CODE							
M0A58 =					7F	E7	84	07
M0A60 =	70	C5	94	89	90	6F	55	16

TABLE 7-continued

ADDRESS	CODE							
M0A68 =	25	DD	94	18	28	0D	71	2A
M0A70 =	0F	CD	7F	8D	94	07	28	0D
M0A78 =	63	29	0B	64	2A	0F	CC	17
M0A80 =	29	0C	4B	20	FF	55	2A	0F
M0A88 =	CB	20	DD	17	20	F0	17	20
M0A90 =	20	63	6C	5C	A1	22	40	B1
M0A98 =	79	57	50	28	07	B8	28	08
M0AA0 =	17	47	24	1D	0B	70	C6	94
M0AA8 =	03	20	FF	81	02	30	5C	37
M0AB0 =	81	EA	70	57	28	08	01	24
M0AB8 =	33	B5	A4	E0	84	0F	70	CC
M0AC0 =	81	04	20	92	5C	0A	1F	0B
M0AC8 =	25	27	94	F3	28	08	54	7F
M0AD0 =	57	29	0C	59	2A	0F	D3	20
M0AD8 =	F0	17	47	17	76	5B	79	50
M0AE0 =	47	24	1D	0B	41	5C	63	6D
M0AE8 =	70	CC	81	02	30	0A	1F	0B
M0AF0 =	25	27	94	F5	28	08	01	62
M0AF8 =	6B	4E	B4	23	80	B4	23	80
M0B00 =	B4	4A	1F	B5	5A	8F	0A	60
M0B08 =	69	20	FF	8E	16	24	32	5A
M0B10 =	4E	3B	94	E7	70	B4	28	08
M0B18 =	54	48	25	13	94	47	29	08
M0B20 =	D5							
M0B8 =	08	28	08	01	62	6B	3A	90
M07C0 =	03	5C	4E	4A	1F	5A	B5	48
M07C8 =	25	13	94	04	A4	8F	F4	A4
M07D0 =	8F	F0	56	28	08	54	46	21
M07D8 =	0F	25	09	91	0F	6B	4E	25
M07E0 =	20	92	09	4E	25	64	92	04
M07E8 =	8F	FA	0C	20	FF	56	0C	
M07F8 =							00	34
M0800 =	68	A1	23	80	B1	47	13	13
M0808 =	C7	5A	2A	0F	C1	16	2A	07
M0810 =	FD	8E	16	CA	5A	B5	1C	08
M0818 =	2A	0F	C1	16	59	08	28	08
M0820 =	5B	A4	25	10	82	0F	25	49
M0828 =	92	0B	17	4A	1F	5A	B5	3B
M0830 =	94	F0	90	04	20	FF	56	90
M0838 =	1B	08	2A	0F	C1	16	59	28
M0840 =	08	5B	16	21	7F	B4	23	80
M0848 =	B4	23	80	B4	4A	1F	5A	B5
M0850 =	3B	94	F0	09	70	B5	A1	23
M0858 =	80	B1	1C	A1	23	80	B1	73
M0860 =	5B	47	13	C7	24	7C	5A	49
M0868 =	15	13	CA	5A	B5	2A	0F	D6
M0870 =	1C							

TABLE 8

ADDRESS	CODE							
M09E8 =					70	58	55	C7
M09F0 =	84	09	2A	0F	CA	16	25	EE
M09F8 =	84	DC	2A	0F	D4	16	25	09
M0A00 =	92	04	22	80	51	43	25	09
M0A08 =	91	13	65	6D	4C	25	03	92
M0A10 =	0A	25	01	73	5E	5D	94	C1
M0A18 =	90	03	71	5C	2A	0F	CD	7C
M0A20 =	5A	20	F0	17	3A	94	FD	28
M0A28 =	07	B8	2A	0F	D4	47	17	28
M0A30 =	08	17	46	59	25	FF	94	09
M0A38 =	28	07	EF	28	0D	3E	90	1A
M0A40 =	2A	0F	D6	16	25	56	94	0C
M0A48 =	16	25	43	94	07	A1	22	10
M0A50 =	B1	90	07	A1	22	10	23	10
M0A58 =	B1	29	0B	70				
M0B20 =	7F	2A	0F	CD	17	17	2A	
M0B28 =	0F	D4	70	88	28	0D	71	81
M0B30 =	04	28	0D	63	29	0C	4B	

TABLE 9

ADDRESS	CODE							
M0878 =							43	25
M0880 =	30	94	1C	28	08	71	70	5C
M0888 =	55	2A	0F	D4	16	6A	5C	2A
M0890 =	0F	D3	7F	17	17	17	20	F0
M0898 =	17	17	17	29	0C	4B	28	09

TABLE 9-continued

ADDRESS	CODE							
M08A0 =	01	4C	25	03	94	F6	73	59
M08A8 =	79	57	28	08	1D	73	5A	2A
M08B0 =	0F	D2	4A	8E	16	8D	8D	8D
M08B8 =	94	14	3A	94	F3	2A	0F	CA
M08C0 =	20	F0	17	2A	0F	C1	49	17
M08C8 =	70	58	29	09	FA	37	81	DB
M08D0 =	39	94	D6	90	AF			

For a clearer understanding of Tables 1 to 9, in addition to the content of the cells in the RAM memory, Tables 10 to 18 also show the meaning of the instruction symbols used. These are in assembler language, which can be found in the operating manuals supplied by the maker of the 3870 microcomputer.

TABLE 10

AD-DRESS	CODE	ASSEM-BLER	START	RORG	0
				ENTRY	LOOP
				EXTRN	CALE,CALEN, STAR,TACC
0000	1A			DI	
0001	70			CLR	
0002	B4			OUTS	DOP
0003	62			LISU	VEN
0004	6C			LISL	VAR
0005	5C			LR	S,A
0006	52			LR	RIF,A
0007	2A0FC0			DCI	BUF
000A	20E0			LI	H'EO'
000C	17			ST	
000D	71			LIS	1
000E	17			ST	
000F	7D			LIS	13
0010	58			LR	MOO,A
0011	20F0			LI	H'FO'
0013	17			ST	
0014	38			DS	MOO
0015	94FD			BNZ	*-2
0017	2010			LI	H'10'
0019	B1			OUTS	S2P
001A	6F			LISL	FMU
001B	5C			LR	S,A
001C	65			LISU	5
001D	6D			LISL	5
001E	5C			LR	S,A
001F	20AA			LI	H'AA'
0021	B6			OUTS	6
0022	2A0FFF			DCI	FUNZ
0025	2034			LI	NOR
0027	17			ST	
0028	203C			LI	60
002A	53			LR	TAS,A
002B	43	LOOP		LR	A,TAS
002C	253C			CI	60
002E	8401			BZ	INIZ
0030	20A0	INIZ		LI	160
0032	67			LISU	TIME
0033	6F			LISL	TIME
0034	5E			LR	D,A
0035	5D			LR	I,A
0036	2800D7	IZZ		PI	INPUT
0039	9419			BNZ	STA1
003B	2A0FFF			DCI	FUNZ
003E	16			LM	
003F	2533			CI	51
0041	94E9			BNZ	LOOP
0043	43			LR	A,DAT
0044	252B			CI	CROT
0046	94E4			BNZ	LOOP
0048	1A			DI	
0049	3C			DS	S
004A	94EB			BNZ	IZZ
004C	4E			LR	A,D
004D	3D			DS	I
004E	94E7			BNZ	IZZ
0050	290000			JMP	CALEN

TABLE 10-continued

AD-DRESS	CODE	ASSEM-BLER		
5	0053	20BB	STA1	LI
	0055	B7		OUTS
	0056	2800D7	STARTB	PI
	0059	94FC		BNZ
	005B	1A		DI
	005C	A7		INS
	005D	91D8		BM
10	005F	71		LIS
	0060	5A		LR
	0061	203F		LI
	0063	0B		LR
	0064	70		CLR
	0065	5E		LR
	0066	5C		LR
15	0067	59		LR
	0068	20A0	RD1	LI
	006A	B7		OUTS
	006B	2800D7	REA	PI
	006E	4B		LR
20	006F	E9		XS
	0070	84FA		BZ
	0072	4B		LR
	0073	59		LR
	0074	70	D2	CLR
	0075	CB		AS
25	0076	8404		BZ
	0078	4A		LR
	0079	CC		AS
	007A	5C		LR
	007B	4A	ZERO	LR
	007C	13		SL
	007D	5A		LR
30	007E	840C		BZ
	0080	2510		CI
	0082	940B		BNZ
	0084	0A		LR
	0085	253F		CI
	0087	840E		BZ
35	0089	9004		BR
	008B	71	T1	LIS
	008C	5A		LR
	008D	4D		LR
	008E	A7	TEMPO	INS
	008F	91D8		BM
40	0091	20FF		LI
	0093	B7		OUTS
	0094	90DF		BR
	0096	203E	END	LI
	0098	0B		LR
	0099	70		CLR
45	009A	59		LR
	009B	71		LIS
	009C	5A		LR
	009D	2510	BIT1	CI
	009F	9405		BNZ
	00A1	4D		LR
50	00A2	4C		LR
	00A3	15		SL
	00A4	5C		LR
	00A5	4C	BIT	LR
	00A6	12		SR
	00A7	5C		LR
	00A8	FA		NS
55	00A9	C9		AS
	00AA	59		LR
	00AB	4A		LR
	00AC	13		SL
	00AD	5A		LR
	00AE	81EE		BP
60	00B0	49		LR
	00B1	253E		CI
	00B3	8405		BZ
	00B5	53		LR
	00B6	290030		JMP
	00B9	43	TEST	LR
65	00BA	2531		CI
	00BC	8105		BP
	00BE	2A0FFF		DCI
	00C1	17		ST
	00C2	2A0FFF	TE	DCI

TABLE 10-continued

AD- DRESS	CODE	ASSEM- BLER			
00C5	16		LM		
00C6	2533		CI	51	5
00C8	8406		BZ	C	
00CA	9207		BNC	D	
00CC	290000		JMP	TACC	
00CF	290000	C	JMP	CALE	
00D2	43	D	LR	A,TAS	
00D3	52		LR	RIF,A	10
00D4	290000		JMP	STAR	
00D7	70	INPUT	CLR		
00D8	B0		OUTS	IN	
00D9	A0		INS	IN	
00DA	18		COM		
00DB	2101		NI	TC	15
00DD	5B		LR	CON,A	
CODE	1C		POP		
			END		

TABLE 11-continued

ADDRESS	CODE	ASSEMBLER			
00BA	52		LR		CRT,A
00BB	28017C		PI		OUTL
00BE	45		LR		A,ADD
00BF	1F		INC		
00C0	2107		NI		7
00C2	55		LR		ADD,A
00C3	72		LIS		2
00C4	52	PB1	LR		CRT,A
00C5	905D	W41	BR		W4
00C7	9050	W44	BR		WRT
00C9	70	PD	LIS		0
00CA	52		LR		CRT,A
00CB	28017C		PI		OUTL
00CE	905A		BR		W3
00D0	38	RDM	DS		FLA
00D1	77		LIS		7
00D2	55		LR		ADD,A
00D3	70		CLR		
00D4	52		LR		CRT,A
00D5	2A057F		DCI		MESS
00D8	48	RM1	LR		A,FLA
00D9	2101		NI		1
00DB	9415		BNZ		RM5
00DD	201E		LI		30
00DF	59		LR		TEM,A
00E0	2020		LI		C'
00E2	2A0FDF		DCI		DATA
00E5	17		ST		
00E6	17		ST		
00E7	42	RM3	LR		A,CRT
00E8	17		ST		
00E9	1F		INC		
00EA	52		LR		CRT,A
00EB	39		DS		TEM
00EC	94FA		BNZ		RM3
00EE	2A0FDF		DCI		DATA
00F1	2020	RM5	LI		32
00F3	59		LR		TEM,A
00F4	2801B0		PI		022
00F7	35		DS		ADD
00F8	81DF		BP		RM1
00FA	9037		BR		W2
00FC	70	TC1	CLR		
00FD	58		LR		FLA,A
00FE	52		LR		CRT,A
00FF	07		LR		QLA
0100	2020		LI		C'
0102	59		LR		TEM,A
0103	2801C7		PI		STO
0106	76		LIS		6
0107	55		LR		ADD,A
0108	28017C	OL	PI		OUTL
010B	35		DS		ADD
010C	81FB		BP		OL
010E	20C0		LI		BIANCO
0110	50		LR		COL,A
0111	201E		LI		30
0113	52		LR		CRT,A
0114	77	PL	LIS		7
0115	55		LR		ADD,A
0116	9018	W11	BR		W1
0118	43	WRT	LR		A,DAT
0119	2520		CI		C'
011B	8403		BZ		W5
011D	C0		AS		COL
011E	E8		XS		FLA
011F	59	W5	LR		TEM,A
0120	2801C7		PI		STO
0123	32	W4	DS		CRT
0124	940A		BNZ		W1
0126	28017C		PI		OUTL
0129	201E	W3	LI		30
012B	52		LR		CRT,A
012C	35		DS		ADD
012D	91E6		BM		PL
012F	28017C	W1	PI		OUTL
0132	290000	W2	IMP		LOOP
017C	2A0FDF	OUTL	DCI		DATA
017F	2020		LI		32
0181	59		LR		TEM,A
0182	45		LR		A,ADD

TABLE 11

ADDRESS	CODE	ASSEMBLER			
005C	43	TACC	LR	A,DAT	
005D	2532		CI	TAC	
005F	844A		BZ	TC2	
0061	2530		CI	RAND	25
0063	846C		BZ	RDM	
0065	70		CLR		
0066	C8		AS	FLA	
0067	8405		BZ	TA	
0069	2530		CI	H'30'	
006B	943E		BNZ	TC2	30
006D	45	TA	LR	A,ADD	
006E	15		SL	4	
006F	13		SL	1	
0070	C2		AS	CRT	
0071	18		COM		
0072	07		LR	QLA	35
0073	43		LR	A,DAT	
0074	2520		CI	32	
0076	8150		BP	W44	
0078	252E		CI	RETURN	
007A	841B		BZ	RET	
007C	252F		CI	SHIFT	40
007E	842D		BZ	SHI	
0080	252A		CI	PFOR	
0082	8442		BZ	W41	
0084	2529		CI	PBAK	
0086	842B		BZ	PB	
0088	252B		CI	PDOW	45
008A	843E		BZ	PD	
008C	252D		CI	CLEAR	
008E	8407		BZ	RET	
0090	40		LR	A,COL	
0091	2440		AI	H'40'	
0093	50		LR	COL,A	50
0094	901B		BR	W50	
0096	2020	RET	LI	C'	
0098	59		LR	TEM,A	
0099	2801C7		PI	STO	
009C	32		DS	CRT	
009D	81F8		BP	RET	
009F	43		LR	A,DAT	55
00A0	252D		CI	CLEAR	
00A2	9426		BNZ	PD	
00A4	35		DS	ADD	
00A5	201F		LI	31	
00A7	52		LR	CRT,A	
00A8	81ED		BP	RET	60
00AA	9051	TC2	BR	TC1	
00AC	48	SHI	LR	A,FLA	
00AD	2330		XI	F2	
00AF	58		LR	FLA,A	
00B0	9065	W50	BR	W11	
00B2	42	PB	LR	A,CRT	65
00B3	2402		AI	2	
00B5	251F		CI	31	
00B7	810C		BP	PB1	
00B9	70		LIS	O	

TABLE 11-continued

ADDRESS	CODE	ASSEMBLER		
0183	18		COM	
0184	15		SL	4
0185	13		SL	1
0186	1F		INC	
0187	07		LR	QL,A
0188	2027		LI	CSE+7
018A	B1		OUTS	S2P
018B	2020	BLK	LI	C'
018D	901B		BR	02
018F	49	03	LR	A,TEM
0190	251F		CI	31
0192	84F8		BZ	BLK
0194	03		LR	A,QL
0195	B5		OUTS	TIP
0196	1F		INC	
0197	07		LR	QL,A
0198	70		CLR	
0199	B4		OUTS	DOP
019A	A4		INS	DOP
019B	64		LISU	4
019C	6F		LISL	7
019D	5C		LR	S,A
019E	49		LR	A,TEM
019F	E2		XS	CRT
01A0	4C		LR	A,S
01A1	9407		BNZ	02
01A3	48		LR	A,FLA
01A4	14		SR	4
01A5	12		SR	1
01A6	C0		AS	COL
01A7	241E		AI	PUNT-1
01A9	17	02	ST	
01AA	39		DS	TEM
01AB	94E3		BNZ	03
01AD	2A0FDF		DCI	DATA
01B0	08	022	LR	K,P
01B1	77		LIS	7
01B2	B1		OUTS	S2P
01B3	A0		INS	O
01B4	2110		NI	RS
01B6	94FC		BNZ	*-3
01B8	2020		LI	32
01BA	59		LR	TEM,A
01BB	45		LR	A,ADD
01BC	2210		OI	DT
01BE	B1		OUTS	S2P
01BF	280170	033	PI	DCL
01C2	94FC		BNZ	033
01C4	77		LIS	7
01C5	B1		OUTS	S2P
01C6	OC		PK	
01C7	A1	STO	INS	S2P
01C8	2220		OI	CSE
01CA	B1		OUTS	S2P
01CB	03		LR	A,QL
01CC	B5		OUTS	TIP
01CD	1F		INC	
01CE	07		LR	QL,A
01CF	49		LR	A,TEM
01D0	B4		OUTS	DOP
01D1	A1		INS	S2P
01D2	2308		XI	DC
01D4	B1		OUTS	S2P
01D5	2328		XI	DC+CSE
01D7	B1		OUTS	S2P
01D8	1C		POP	
			END	

TABLE 12

AD- DRESS	CODE	ASSEMBLER		
		CALE	RORG	O
			ENTRY	TACC,OUTL
			EXTRN	LOOP,CALEN
0000	66		LISU	DATE
0001	43		LR	A,DAT
0002	2533		CI	CAL
0004	9422		BNZ	CX
0006	6D		LISL	ANN-2
0007	2080		LI	F1
0009	58		LR	FLA,A
000A	2A0FDF		DCI	DATA
000B	77		LIS	7
000E	59		LR	TEM,A
000F	203F		LI	C'?
0011	2240		OI	GIALLO
0013	17	ST1	ST	
0014	39		DS	TEM
0015	94FD		BNZ	ST1
0017	2A0FE1		DCI	DATA+2
001A	202F		LI	C'1
001C	2240		OI	GIALLO
001E	17		ST	
001F	70		CLR	
0020	52		LR	CRT,A
0021	2A0FDF		DCI	DATA
0024	0E		LR	Q,DC
0025	9022		BR	DC2
0027	40	CX	LR	A,COL
0028	0B		LR	IS,A
0029	0F		LR	DC,Q
002A	42		LR	A,CRT
002B	2502		CI	2
002D	9402		BNZ	CX1
002F	1F		INC	
0030	8E	CX1	ADC	
0031	1F		INC	
0032	52		LR	CRT,A
0033	43		LR	A,DAT
0034	2230		OI	H'30'
0036	2240		OI	GIALLO
0038	17		ST	
0039	C8		AS	FLA
003A	9109		BM	DEC
003C	210F		NI	H'F'
003E	CC		AS	S
003F	5D		LR	I,A
0040	2080		LI	F1
0042	9004		BR	DC1
0044	15	DEC	SL	4
0045	5C		LR	S,A
0046	70		CLR	
0047	58	DC1	LR	FLA,A
0048	2A0136	DC2	DCI	CLD
004B	28014A		PI	OUTL1
004E	0A		LR	A,IS
004F	50		LR	COL,A
0050	24F8		AI	-(ANN+1)
0052	2107		NI	7
0054	9404		BNZ	IN
0056	290000		JMP	CALEN
0059	290000	IN	JMP	LOOP

TABLE 13

ADDRESS	CODE	ASSEMBLER		
		CALEN	RORG	O
			ENTRY	FINE
			EXTERN	LOOP,
OUTL				
0000	9017		BR	START
0002	71	ERR1	LIS	1
0003	9010		BR	ERROR

TABLE 13-continued

ADDRESS	CODE	ASSEMBLER		
0005	2012	ERR2	LI	H'12'
0007	900C		BR	ERROR
0009	2024	ERR3	LI	H'24'
000B	5D		LR	I,A
000C	2099		LI	H'99'
000E	9005		BR	ERROR
0010	2016	ERR4	LI	H'16'
0012	5D		LR	I,A
0013	70		CLR	
0014	5C	ERROR	LR	S,A
0015	280248		PI	BEEP
0018	66	START	LISU	DATE
0019	6D		LISL	ANN-2
001A	4C		LR	A,S
001B	2500		CI	O
001D	82E4		BC	ERR1
001F	2512		CI	H'12'
0021	92E3		BNC	ERR2
0023	4D		LR	A,I
0024	4C		LR	A,S
0025	2524		CI	H'24'
0027	92E1		BNC	ERR3
0029	2515		CI	H'15'
002B	82E4		BC	ERR4
002D	6C		LISL	ANN-3
002E	4D	BIN	LR	A,I
002F	4C		LR	A,S
0030	210F		NI	H'E'
0032	58		LR	TE2,A
0033	4E		LR	A,D
0034	14		SR	4
0035	13		SL	1
0036	59		LR	TE1,A
0037	13		SL	1
0038	13		SL	1
0039	C9		AS	TE1
003A	C8		AS	TE2
003B	58		LR	TE2,A
003C	4E		LR	A,D
003D	4E		LR	A,D
003E	48		LR	A,TE2
003F	5D		LR	I,A
0040	4D		LR	A,I
0041	4D		LR	A,I
0042	8FEB		BR7	BIN
0044	2A02E3		DCI	EMME-16
0047	6A		LISL	ANN-5
0048	4D		LR	A,I
0049	5A		LR	MES,A
004A	4C		LR	A,S
00AB	8E		ADC	
004C	13		SL	1
004D	13		SL	1
004E	CD		AS	I
004F	CC		AS	S
0050	24ED	FO	AI	-19
0052	82FD		BC	FO
0054	2413		AI	19
0056	67		LISU	MODU
0057	6A		LISL	C
0058	5C		LR	S,A
0059	2013		LI	19
005B	59		LR	TE1,A
005C	16		LM	
005D	CC	AS	AS	S
005E	215D		CI	29
0060	8203		BC	F1
0062	24E2		AI	-30
0064	39	F1	DS	TE1
0065	94F7		BNZ	AS
0067	69		LISL	D
0068	5C		LR	S,A
0069	13		SL	1
006A	CC		AS	S
006B	58		LR	TE2,A
006C	66		LISU	DATE
006D	6C		LISL	ANN-3
006E	4C		LR	A,S
006F	2103		NI	3
0071	C8		AS	TE2

TABLE 13-continued

ADDRESS	CODE	ASSEMBLER		
0072	58		LR	TE2,A
0073	4E		LR	A,D
0074	CC		AS	S
0075	CC		AS	S
0076	24F9	F2	AI	-7
0078	82FD		BC	F2
007A	240A		AI	10
007C	13		SL	1
007D	C8		AS	TE2
007E	13		SL	1
007F	58		LR	TE2,A
0080	4C		LR	A,S
0081	12		SR	1
0082	12		SR	1
0083	18		COM	
0084	CC		AS	S
0085	C8		AS	TE2
0086	24F9	F3	AI	-7
0088	82FD		BC	F3
008A	2407		AI	7
008C	67		LISU	MODU
008D	68		LISL	E
008E	5C		LR	S,A
008F	2416		AI	22
0091	69		LISL	D
0092	CC		AS	S
0093	58		LR	TE2,A
0094	59		LR	TE1,A
0095	251E		CI	30
0097	811D		BP	MARZ
0099	24E1		AI	-31
009B	59		LR	TE1,A
009C	2519		CI	25
009E	910F		BM	AP2
00A0	9411		BNZ	APRIL
00A2	68		LISL	E
00A3	4C		LR	A,S
00A4	2506		CI	6
00A6	940B		BNZ	APRIL
00A8	6A		LISL	C
00A9	4C		LR	A,S
00AA	250A		CI	10
00AC	8105		BP	APRIL
00AE	49	AP2	LR	A,TE1
00AF	24F9		AI	-7
00B1	59		LR	TE1,A
00B2	74	APRIL	LIS	4
00B3	9002		BR	MA1
00B5	73	MARZ	LIS	3
00B6	EA	MA1	XS	MES
00B7	70		CLR	
00B8	5B		LR	GIO,A
00B9	9408		BNZ	PMES
00BB	2067	BCD	LI	H'67'
00BD	DB		ASD	GIO
00BE	5B		LR	GIO,A
00BF	39		DS	TE1
00C0	81FA		BP	BCD
00C2	2A02FB	PMES	DCI	ESSE-1
00C5	4A		LR	A,MES
00C6	8E		ADC	
00C7	48		LR	A,TE2
00C8	18		COM	
00C9	243C		AI	60
00CB	88		AM	
00CC	58		LR	TE2,A
00CD	70		CLR	
00CE	59		LR	TE1,A
00CF	66		LISU	DATE
00D0	6C		LISL	ANN-3
00D1	4C		LR	A,S
00D2	2103		NI	3
00D4	9412		BNZ	NORM
00D6	CE		AS	D
00D7	9406		BNZ	BIS
00D9	4C		LR	A,S
00DA	2103		NI	3
00DC	940A		BNZ	NORM
00DE	4E	BIS	LR	A,D
00DF	4C		LR	A,S

TABLE 13-continued

ADDRESS	CODE	ASSEMBLER		
00E0	2502		CI	2
00E2	9104		BM	NORM
00E4	38		DS	TE2
00E5	71		LIS	1
00E6	59		LR	TE1,A
00E7	6C	NORM	LISL	A
00E8	67		LISU	MODU
00E9	48		LR	A,TE2
00EA	24F9	NI	AI	-7
00EC	81FD		BP	N1
00EE	2407		AI	7
00F0	13		SL	1
00F1	13		SL	1
00F2	5C		LR	S,A
00F3	70		CLR	
00F4	55		LR	ADD,A
00F5	65		LISU	5
00F6	6F		LISL	7
00F7	5E		LR	D,A
00F8	8FFE		BR7	*-1
00FA	28000		PI	OUTL
00FD	2A0FE1		DCI	DATA+2
0100	0E	LLMM	LR	Q,DC
0101	03		LR	A,QL
0102	2400		AI	O
0104	812F		BP	DSC
0106	16		LM	
0107	213F		NI	H'3F'
0109	252F		CI	C'1'
010B	94F4		BNZ	LLMM
010D	16		LM	
010E	210F		NI	H'E'
0110	13		SL	1
0111	5C		LR	S,A
0112	13		SL	1
0113	13		SL	1
0114	CC		AS	S
0115	5C		LR	S,A
0116	16		LM	
0117	210F		NI	H'F'
0119	CC		AS	S
011A	18		COM	
011B	1F		INC	
011C	CA		AS	MES
011D	94E2		BNZ	LLMM
011F	20FB		LI	-5
0121	8E		ADC	
0122	16		LM	
0123	210F		NI	H'F'
0125	13		SL	1
0126	5C		LR	S,A
0127	13		SL	1
0128	13		SL	1
0129	CC		AS	S
012A	5C		LR	S,A
012B	16		LM	
012C	210F		NI	H'F'
012E	CC		AS	S
012F	5D		LR	I,A
0130	73		LIS	3
0131	8E		ADC	
0132	90CD		BR	LLMM
0273	D3	MESI	DC	H'D3'
0274	47454E		DC	C'GENN'
0278	0680		DC	H'0680'
027A	454542	C'DC	C'FEB- BRAIO'	
0282	83		DC	H'83'
0283	4D4152		DC	C'MARZO'
0288	82		DC	H'82'
0289	415052		DC	C'APRILE'
028F	D3		DC	H'D3'
0290	4D4147		DC	C'MAGGIO'
0296	82		DC	H'82'
0297	474955		DC	C'GIUGNO'
029D	83		DC	H'83'
029E	4C5547		DC	C'LUGLIO'
02A4	B3		DC	H'B3'
02A5	41474F		DC	C'AGOSTO'
02AB	82		DC	H'82'

TABLE 13-continued

ADDRESS	CODE	ASSEMBLER		
02AC	534554		DC	C'SETT'
02B0	0F83		DC	H'OF83'
02B2	4F5454		DC	C'8'
02B6	0BD2		DC	H'OBO2'
02B8	4E4F56		DC	C'NOV'
02BB	04C3		DC	H'O4C3'
02BD	444943		DC	C'DICEMBRE'
02C5	80		DC	H'80'
02C6	4C554D	GIORNI	DC	C'LUMAMEGIVESADO'
02D4	71F2F3		DC	H'71F2E3F4F5F6F778'
02DC	F99091		DC	H'F990919293941596'
02E4	979899		DC	H'979898AOA1A2A3A4'
02EC	2526A7		DC	H'2526A7A9BOB1'
02F3	16	EMME	DC	22
02F4	17		DC	23
02F5	17		DC	23
02F6	18		DC	24
02F7	18		DC	24
02F8	18		DC	24
02F9	19		DC	25
02FA	1A		DC	26
02FB	19		DC	25
02FC	01	ESSE	DC	1
02FD	04		DC	4
02FE	04		DC	4
02FF	00		DC	0
0300	02		DC	2
0301	05		DC	5
0302	00		DC	0
0303	03		DC	3
0304	06		DC	6
0305	01		DC	1
0306	04		DC	4
0307	06	FINE	DC	6
			ORG	MESI
			END	

TABLE 14

ADDRESS	CODE	ASSEMBLER		
0134	2040	DSC	LI	GIALLO
0136	50		LR	COL,A
0137	77		LIS	7
0138	55		LR	ADD,A
0139	B1		OUTS	ADP
013A	2A0273		DCI	MESI
013D	45	RIGA	LR	A,ADD
013E	2210		OI	DT
0140	B1		OUTS	ADP
0141	201F		LI	31
0143	52		LR	CRT,A
0144	49		LR	A,TE1
0145	2502		CI	2
0147	8470		BZ	BB4
0149	280264	AAA	PI	BLK
014C	42		LR	A,CRT
014D	251B		CI	27
014F	91F9		BM	AAA
0151	45		LR	A,ADD
0152	2507		CI	7
0154	8425		BZ	PRI
0156	2505		CI	5
0158	9406		BNZ	BBB
015A	6C		LISL	A
015B	67		LISU	MODU
015C	3C		DS	S
015D	81EB		BP	AAA
015F	16	BBB	LM	
0160	56		LR	DAT,A
0161	45		LR	A,ADD
0162	2506		CI	6
0164	42		LR	A,CRT
0165	9454		BNZ	MMM
0167	2504		CI	4
0169	2080		LI	MAGEN
016B	9103		BM	*+4
016D	2000		LI	ROSSO
016F	50		LR	COL,A

TABLE 14-continued

ADDRESS	CODE	ASSEMBLER		
0170	28025E		PI	OUT1
0173	16		LM	
0174	56		LR	DAT,A
0175	28025E		PI	OUT1
0178	907D		BR	LLL
017A	42	PRI	LR	A,CRT
017B	2516		CI	22
017D	91CB		BM	AAA
017F	70	DUR	CLR	
0180	88		AM	
0181	81FD		BP	DUR
0183	3A		DS	MES
0184	94FA		BNZ	DUR
0186	5A		LR	MES,A
0187	210F		NI	15
0189	9402		BNZ	*+3
018B	C9		AS	TE1
018C	59		LR	TE1,A
018D	208E		LI	H'8E'
018F	D9		ASD	TE1
0190	59		LR	TE1,A
0191	16		LM	
0192	251F	DDD	CI	31
0194	8106		BP	DD1
0196	56		LR	DAT,A
0197	28025E		PI	OUT1
019A	70		CLR	
019B	8E	DD1	ADC	
019C	70		CLR	
019D	88		AM	
019E	81F3		BP	DDD
01A0	280264	EEE	PI	BLK
01A3	42		LR	A,CRT
01A4	250A		CI	10
01A6	91F9		BM	EEE
01A8	6E		LISL	ANN-1
01A9	66		LISU	DATE
01AA	4D		LR	A,I

TABLE 14-continued

ADDRESS	CODE	ASSEMBLER		
01AB	58		LR	TE2,A
01AC	280249		PI	ASCII
01AF	4E		LR	A,D
01B0	58		LR	TE2,A
01B1	2A02C6		DCI	GIORNI
01B4	9073		BR	NNN
01B6	9086	RI	BR	RIGA
01B8	9072	BB4	BR	BB3
01BA	2504	MMM	CI	4
01BC	8132		BP	RED
01BE	46		LR	A,DAT
01BF	217F		NI	H'7F'
01C1	2570		CI	H'70'
01C3	8203		BC	MM1
01C5	210F		NI	H'F'
01C7	EB	MM1	XS	GIO
01C8	8426		BZ	RED
01CA	46		LR	A,DAT
01CB	211F		NI	H'1F'
01CD	65		LISU	5
01CE	68		LISL	0
01CF	EE		XS	D
01D0	8405		BZ	GIAL
01D2	8FFC		BR7	*-3
01D4	9005		BR	BB5
01D6	2040	GIAL	LI	GIALLO
01D8	903D		BR	BB2
01DA	70	BB5	CLR	
01DB	C6		AS	DAT
01DC	9137		BM	BIANCO
01DE	4A		LR	A,MES
01DF	14		SR	4
01EO	2107		NI	7
01E2	E5		XS	ADD
01E3	841D		BZ	MAG
01E5	4A		LR	A,MES
01E6	25C3		CI	H'C3'
01E8	942B		BNZ	BIANCO
01EA	45		LR	A,ADD
01EB	2502		CI	2
01ED	9126		BM	BIANCO
01EF	2000	RED	LI	ROSSO
01F1	9024		BR	BB2
01F3	280249	BB1	PI	ASCII
01F6	280264	LLL	PI	BLK
01F9	280264		PI	BLK
01FC	9133		BM	HHH
01FE	29015F		JMP	BBB
0201	6D	MAG	LISL	ANN-2
0202	66		LISU	DATE
0203	4D		LR	A,I
0204	2505		CI	5
0206	94E8		BNZ	RED
0208	4D		LR	A,I
0209	2518		CI	H'18'
020B	92E3		BNC	RED
020D	9406		BNZ	BIANCO
020F	4E		LR	A,D
0210	2589		CI	H'89'
0212	92DC		BNC	RED
0214	20C0	BIANCO	LI	BIAN
0216	50	BB2	LR	COL,A
0217	46		LR	A,DAT

TABLE 14-continued

ADDRESS	CODE	ASSEMBLER		
0218	2280		OI	H'80'
021A	56		LR	DAT,A
021B	2140		NI	H'40'
021D	46		LR	A,DAT
021E	9403		BNZ	BLA
0220	217F		NI	H'7F'
0222	58	BLA	LR	TE2,A
0223	E9		XS	TE1
0224	94CE		BNZ	BB1
0226	72		LIS	2
0227	59		LR	TE1,A
0228	280249	NNN	PI	ASCII
022B	280264	BB3	PI	BLK
022E	81FC		BP	BB3
0230	77	HHH	LIS	7
0231	B1		OUTS	ADP
0232	35		DS	ADD
0233	8182		BP	R1
0235	6D		LISL	ANN-2
0236	66		LISU	DATE
0237	4C		LR	A,S
0238	2512		CI	H'12'
023A	9404		BNZ	ST3
023C	71		LIS	1
023D	5D		LR	I,A
023E	4D		LR	A,I
023F	2067	ST3	LI	H'67'
0241	DC		ASD	S
0242	5E		LR	D,A
0243	84FB		BZ	ST3
0245	290000		JMP	LOOP
0248	1C	BEEP	POP	
0249	08	ASCII	LR	K,P
024A	48		LR	A,TE2
024B	14		SR	4
024C	250F		CI	15
024E	9402		BNZ	*+3
0250	15		SL	4
0251	2430		AI	H'30'
0253	56		LR	DAT,A
0254	28025E		PI	OUT1
0257	48		LR	A,TE2
0258	210F		NI	15
025A	2430		AI	H'30'
025C	56		LR	DAT,A
025D	09		LR	P,K
025E	46	OUT1	LR	A,DAT
025F	213F		NI	H'3F'
0261	CO		AS	COL
0262	9005		BR	OUT+1
0264	2020	BLK	LI	C'
0266	56		LR	DAT,A
0267	46	OUT	LR	A,DAT
0268	18		COM	
0269	B4		OUTS	DAP
026A	45		LR	A,ADD
026B	2218		OI	DC+DT
026D	B1		OUTS	ADP
026E	2308		XI	DC
0270	B1		OUTS	ADP
0271	32		DS	CRT
0272	1C		POP	

TABLE 15

ADDRESS	CODE	ASSEMBLER		
			STAR	
			RORG	0
			ENTRY	DISPLAY,IN1
			ENTRY	MEM6,DIR,OUTPUT,IN2
			EXTRN	SET,RICER,READ,EEE
			EXTRN	VLC,INTER,LOOP,ADF
			EXTRN	PAG,PRG,ETI,PET,PETI
0000	2A0FCA		DCI	BUF+10
0003	43		LR	A,TAS
0004	2534		CI	NOR
0006	9435		BNZ	CX
0008	28044D		PI	D11
000B	78		LIS	8
000C	8E		ADC	

TABLE 15-continued

ADDRESS	CODE	ASSEMBLER		
000D	7F		LIS	15
000E	8D		CM	
000F	9416		BNZ	D12
0011	65		LISU	5
0012	6A		LISL	2
0013	4C		LR	A,S
0014	901E		BR	D18
0016	2A0FCD	D14	DCI	BUFC
0019	8D		CM	
001A	9414		BNZ	D16
001C	70		CLR	
001D	C1		AS	CAN
001E	8119		BP	D17
0020	210F		NI	H'F'
0022	57	D15	LR	NU,A
0023	2900D0		JMP	INDIR
0026	2A0FD8	D12	DCI	BUFT+5
0029	8D		CM	
002A	94EB		BNZ	D14
002C	280455		PI	CET
002F	2A0FD4	D16	DCI	BUFT+1
0032	16		LM	
0033	2509	D18	CI	9
0035	82EC		BC	D15
0037	41		LR	A,CAN
0038	59	D17	LR	FOR,A
0039	2900C3		JMP	DIR
003C	252F	CX	CI	47
003E	8433		BZ	SHIFT
0040	252C		CI	44
0042	8429		BZ	P
0044	2530		CI	48
0046	844C		BZ	MODO
008	5B		LR	TE1,A
0049	48		LR	A,MOO
004A	2531		CI	49
004C	9404		BNZ	*+5
004E	290000		IMP	PET
0051	2530		CI	48
0053	841B		BZ	P+3
0055	4B		LR	A,TE1
0056	2513		CI	19
0058	843A		BZ	MODO
005A	2A0FCB		DCI	BUF+11
005D	2509		CI	9
005F	8124		BP	SLV
0061	2517		CI	23
0063	812F		BP	MODO
0065	251D		CI	29
0067	912B		BM	MODO
0069	290000		JMP	RICER
006C	290000	P	JMP	PAG
006F	290000		JMP	PRG
0072	16	SHIFT	LM	
0073	25EE		CI	H'EE'
0075	2A0FCA		DCI	BUF+10
0078	8405		BZ	SH
007A	20EE		LI	H'EE'
007C	9003		BR	SH+2
007E	20F0	SH	LI	H'FO'
0080	17		ST	
0081	290334		JMP	DLY
0084	5B	SLV	LR	TE1,A
008	47		LR	A,NU
0086	56		LR	ND,A
0087	17		ST	
0088	4B		LR	A,TE1
0089	57		LR	NU,A
008A	17		ST	
008B	7F		LIS	15
008C	E6		XS	ND
008D	8413		BZ	MODI
008F	70		CLR	
0090	58		LR	MOO,A
0091	900F		BR	MODI
0093	250E	MODO	CI	14
0095	9108		BM	MOD
0097	250B		CI	11
0099	8104		BP	MOD
009B	29021B		JMP	FINET
009E	58	MOD	LR	MOO,A

TABLE 15-continued

ADDRESS	CODE	ASSEMBLER		
009F	7F	LIS	15	
00A0	57	LR	NU,A	
00A1	48	MODI	LR	A,MOO
00A2	2A0FCB	DCI	BUF+11	
00A5	2513	CI	19	
00A7	840E	BZ	MMR	
00A9	8126	BP	INDIR	
00AB	2530	CI	48	
00AD	84C1		BZ P+3	
00AF	2516	CI	22	
00B1	911E	BM	INDIR	
00B3	290000	JMP	VLC	
00B6	290140	MMR	JMP	MEMOR
0255	2A0FD6	PETI	DCI	BUFT+3
0258	2030	LI	H'30'	
025A	17	ST		
025B	17	ST		
025C	17	ST		
025D	2801B9	PI	WRTE	
0260	2801F1	PI	SHI	
0263	2A0FD6	DCI	BUFT+3	
0266	73	LIS	3	
0267	5C	LR	S,A	
0268	2031	LI	49	
026A	58	LR	MOO,A	
026B	7F	LIS	15	
026C	90AB	BR	P1-3	
026E	280281	PET	PI	P10
0271	4C	LR	A,S	
0272	2506	CI	6	
0274	94A6	BNZ	P1	
0276	2801B9	PI	WRTE	
0279	70	CLR		
027A	57	LR	NU,A	
027B	58	LR	MOO,A	
027C	2A0FCA	DCI	BUF+10	
027F	9096	BR	P9	
0281	2A0FCA	P10	DCI	BUF+10
0284	16	LM		
0285	25F0	CI	H'F0'	
0287	70	LIS	0	
0288	9403	BNZ	*+4	
028A	2030	LI	H'30'	
028C	50	LR	TE3,A	
028D	2A0FD3	DCI	BUFT	
0290	65	LISU	5	
0291	6E	LISL	6	
0292	4C	LR	A,S	
0293	8E	ADC		
0294	1F	INC		
0295	5C	LR	S,A	
0296	43	LR	A,TAS	
0297	E0	XS	TE3	
0298	2410	AI	H'10'	
029A	17	ST		
029B	1C	POP		
		END		

TABLE 16

ADDRESS	CODE	ASSEMBLER		
0140	7F	MEMOR	LIS	15
0141	E7		XS	NU
0142	8407		BZ	MEM7
0144	70		CLR	
0145	C5		AS	FDI
0146	9489		BNZ	INDIR
0148	906F		BR	MEM4
014A	55	MEM7	LR	FDI,A
014B	16		LM	
014C	25DD		CI	H'DD'
014E	9418		BNZ	MEM3
0150	280455		PI	CET
0153	2A0FCD		DCI	BUFC
0156	7F		LIS	15
0157	8D		CM	
0158	9407		BNZ	MEM5
015A	280447		PI	BEEP
015D	290248		JMP	MEM2

TABLE 16-continued

ADDRESS	CODE	ASSEMBLER		
0160	2A0FCC	MEM5	DCI	BUF+12
0163	17		ST	
0164	29032F		JMP	DISPLAY
0167	20FF	MEM3	LI	-1
0169	55		LR	FDI,A
016A	2A0FCB		DCI	BUF+11
016D	20DD		LI	H'DD'
016F	17		ST	
0170	20F0		LI	MSB
0172	17		ST	
0173	2020		LI	32
0175	63		LISU	TREN
0176	6C		LISL	DUR
0177	5C		LR	S,A
0178	A1		INS	S2P
0179	2240		OI	DIS
017B	B1		OUTS	S2P
017C	79	MEM6	LIS	9

TABLE 16-continued

ADDRESS	CODE	ASSEMBLER		
017D	57	LR	NU,A	
017E	50	LR	TE3,A	
017F	280000	RED	PI	READ
0182	280000	PI	ETI	
0185	47	LR	A,NU	
0186	241D	AI	0'35'	
0188	0B	LR	IS,A	
0189	70	CLR		
018A	C6	AS	ND	
018B	9403	BNZ	*+4	
018D	20FF	LI	H'FF'	
018F	8102	BP	DC	
0191	30	DS	TE3	
0192	5C	DC	LR	S,A
0193	37	DS	NU	
0194	81EA	BP	RED	
0196	70	CLR		
0197	57	LR	NU,A	
0198	280000	PI	ADR	
019B	2433	AI	51	
019D	B5	OUTS	TIP	
019E	A4	INS	DOP	
019F	E0	XS	TE3	
01A0	840F	BZ	DB	
01A2	70	DD	CLR	
01A3	CC	AS	S	
01A4	8104	BP	DA	
01A6	2092	LI	H'92'	
01A8	5C	LR	S,A	
01A9	0A	DA	LR	A,IS
01AA	1F	INC		
01AB	0B	LR	IS,A	
01AC	2527	CI	0'47'	
01AE	94F3	BNZ	DD	
01B0	280000	DB	PI	EEE
01B3	7F	LIS	LSB	
01B4	57	LR	NU,A	
01B5	29033D	JMP	OUTPUT	
01B8	2A0FD3	MEM4	DCI	BUFT
01BB	20F0	LI	MSB	
01BD	17	ST		
01BE	47	LR	A,NU	
01BF	17	ST		
01C0	76	LIS	6	
01C1	5B	LR	TE1,A	
01C2	79	LIS	9	
01C3	50	LR	TE3,A	
01C4	47	LR	A,NU	
01C5	241D	AI	0'35'	
01C7	0B	LR	IS,A	
01C8	41	LR	A,CAN	
01C9	5C	LR	S,A	
01CA	63	LISU	TREN	
01CB	6D	LISL	DUR+1	
01CC	70	CK	CLR	
01CD	CC	AS	S	
01CE	8102	BP	*+3	
01D0	30	DS	TE3	
01D1	0A	LR	A,IS	
01D2	7F	INC		
01D3	0B	LR	IS,A	
01D4	2527	CI	0'47'	
01D6	94F5	BNZ	CK	
01D8	280000	MEM1	PI	ADR
01DB	62	LISU	VEN	
01DC	6B	LISL	SIN	
01DD	4E	LR	A,D	
01DE	B4	WRT	OUTS	DOP
01DF	2380	XI	CSE	
01E1	B4	OUTS	DOP	
01E2	2380	XI	CSE	
01E4	B4	OUTS	DOP	
01E5	4A	LR	A,TE2	
01E6	1F	INC		
01E7	B5	OUTS	TIP	
01E8	5A	LR	TE2,A	
01E9	80F0A	BR7	CA	
01EB	60	LISU	0	
01EC	69	LISL	CAN	
01ED	20FF	LI	-1	
01EF	8E	ADC		

TABLE 16-continued

ADDRESS	CODE	ASSEMBLER		
01F0	16	LM		
01F1	2432	AI		50
01F3	5A	LR		TE2,A
01F4	4E	CA	LR	A,D
01F5	3B	DS		TE1
01F6	94E7	BNZ		WRT
01F8	70	CLR		
01F9	B4	OUTS		DOP
01FA	280000	PI		EEE
01FD	48	LR		A,MOO
01FE	2513	CI		19
0200	9447	BNZ		MEM2
0202	290000	JMP		PETI
0138	08	READ	LR	K,P
0139	280181	PI		ADR
013C	62	LISU		VEN
013D	6B	LISL		SIN
013E	3A	DS		TE2
013F	9003	BR		RD+2
0141	5C	RD	LR	S,A
0142	4E	LR		A,D
0143	4A	LR		A,TE2
0144	1F	INC		
0145	5A	LR		TE2,A
0146	B5	OUTS		TIP
0147	48	LR		A,MOO
0148	2513	CI		19
014A	9404	BNZ		*+5
014C	A4	INS		DOP
014D	8FF4	BR7		RD+1
014F	A4	INS		DOP
0150	8FF0	BR7		RD
0152	56	LR		ND,A
0153	2801D4	RG	PI	EEE
0156	46	LR		A,ND
0157	210F	NI		15
0159	2509	CI		9
015B	910F	BM		RE
015D	6B	LISL		SIN
015E	4E	LR		A,D
015F	2520	CI		32
0161	9209	BNC		RE
0163	4E	LR		A,D
0164	2564	CI		100
0166	9204	BNC		RE
0168	8FFA	BR7		*-5
016A	0C	PK		
016B	20FF	RE	LI	H'FF'
016D	56	LR		ND,A
016E	0C	PK		
017E	003468	PAGE	DC	H'003468'
0181	A1	ADR	INS	S2P
0182	2380	XI		CSE
0184	B1	OUTS		S2P
0185	47	LR		A,NU
0186	13	SL		1
0187	13	SL		1
0188	C7	AS		NU
0189	5A	LR		TE2,A
018A	2A0FC1	DCI		BUF+1
018D	16	LM		
018E	2A017D	DCI		PAGE-1
0191	8E	ADC		
0192	16	LM		
0193	CA	AS		TE2
0194	5A	LR		TE2,A
0195	B5	OUTS		TIP
0196	1C	POP		
0197	08	ETI	LR	K,P
0198	2A0FC1	DCI		BUF+1
019B	16	LM		
019C	59	LR		FOR,A
019D	08	ETIC	LR	K,P
019E	2801DB	PI		ADD
01A1	A4	REE	INS	DOP
01A2	2510	CI		H'10'
01A4	820F	BC		ERR
01A6	2549	CI		H'49'
01A8	920B	BNC		ERR
01AA	17	ST		
01AB	4A	LR		A,TE2

TABLE 16-continued

ADDRESS	CODE	ASSEMBLER	
01AC	1F	INC	
01AD	5A	LR	TE2,A
01AE	B5	OUTS	TIP
01AF	3B	DS	TE1
01B0	94F0	BNZ	REE
01B2	9004	BR	WE1
01B4	20FF	ERR	LI H'FF'
01B6	56	LR	ND,A
01B7	901B	WE1	BR WE
01B9	08	WRTE	LR K,P
01BA	2A0FC1	DCI	BUF+1
01BD	16	LM	
01BE	59	LR	FOR,A
01BF	2801DB	PI	ADD
01C2	16	W	LM
01C3	217F	NI	H'7F'
01C5	B4	OUTS	DOP
01C6	2380	XI	CSE
01C8	B4	OUTS	DOP
01C9	2380	XI	CSE
01CB	B4	OUTS	DOP
01CC	4A	LR	A,TE2
01CD	1F	INC	
01C	5A	LR	TE2,A
01CF	B5	OUTS	TIP
01D0	3B	DS	TE1
01D1	94F0	BNZ	W
01D3	09	WE	LR P,K
01D4	70	EEE	CLR
01D5	B5	OUTS	TIP
01D6	A1	INSS	S2P
01D7	2380	XI	CSE
01D9	B1	OUTS	S2P
01DA	1C	POP	
01DB	A1	ADD	INS S2P
01DC	2380	XI	CSE
01DE	B1	OUTS	S2P
01DF	73	LIS	3
01E0	5B	LR	TE1,A
01E1	47	LR	A,NU
01E2	13	SL	1
01E3	C7	AS	NU
01E4	247C	AI	TBE-32
01E6	5A	LR	TE2,A
01E7	49	LR	A,FOR
01E8	15	SL	4
01E9	13	SL	1
01EA	CA	AS	TE2
01EB	5A	LR	TE2,A
01EC	B5	OUTS	TIP
01ED	2A0FD6	DCI	BUFT+3
01F0	1C	POP	

TABLE 17-continued

ADDRESS	CODE	ASSEMBLER	
00FC	2501	CI	1
00F7	73	LIS	3
00F8	5E	LR	D,A
00F9	5D	LR	I,A
00FA	94C1	BNZ	DIRET
00FC	9003	BR	IN2
00FE	71	LIS	1
00FF	5C	LR	S,A
0100	2A0FCD	IN2	DCI BUFC
0103	7C	LIS	12
0104	5A	LR	TE2,A
0105	20F0	LI	MSB
0107	17	ST	
0108	3A	DS	TE2
0109	94FD	BNZ	*-2
010B	280000	PI	READ
010E	2A0FD4	DCI	BUFT+1
0111	47	LR	A,NU
0112	17	ST	
0113	280000	PI	ETI
0116	46	LR	A,ND
0117	59	LR	FOR,A
0118	25FF	CI	-1
011A	9409	BNZ	VCR
011C	280000	PI	SET
011F	280422	PI	BFN
0122	901A	BR	SCA
0124	2A0FD6	VCR	DCI BUFT+3
0127	16	LM	
0128	2556	CI	C'V'
012A	940C	BNZ	AVRS
012C	16	LM	
012D	2543	CI	C'C'
012F	9407	BNZ	AVRS
0131	A1	INS	S2P
0132	2210	OI	AV
0134	B1	OUTS	S2P
0135	9007	BR	SCA
0137	A1	INS	S2P
0138	2210	OI	AV
013A	2310	XI	AV
013C	B1	OUTS	S2P
013D	290254	SCA	JMP CALC
0205	7F	ERROR	LIS 15
0206	2A0FCD	DCI	BUFC
0209	17	ST	
020A	17	ST	
020B	2A0FD4	DCI	BUFT+1
020E	70	CLR	
020F	88	AM	
0210	280455	PI	CET
0213	8104	BP	*+5
0215	280447	VISL	PI BEEP
0218	29032F	JMP	DISPLAY

TABLE 17

ADDRESS	CODE	ASSEMBLER	
00D0	70	INDIR	CLR
00D1	58	LR	M00,A
00D2	55	LR	FDI,A
00D3	C7	AS	NU
00D4	8409	BZ	IN1
00D6	2A0FCA	DCI	BUF+10
00D9	16	LM	
00DA	25EE	CI	H'EE'
00DC	84DC	BZ	ITALIA
00DE	2A0FD4	IN1	DCI BUFT+1
00E1	16	LM	
00E2	2509	CI	9
00E4	9204	BNC	*+5
00E6	2280	OI	H'80'
00E8	51	LR	CAN,A
00E9	43	LR	A,TAS
00EA	2509	CI	9
00EC	9113	BM	IN2
00EE	65	LISU	5
00EF	6D	LISL	5
00F0	4C	LR	A,S
00F1	2503	CI	A,S
00F3	920A	BNC	IN2-2

TABLE 18

ADDRESS	CODE	ASSEMBLER	
01FE	43	PRG	LR A,TAS
01FF	2530	CI	48
0201	941C	BNZ	P2
0203	2801F1	P7	PI SHI
0206	70	LIS	0
0207	5C	LR	S,A
0208	55	LR	FDI,A
0209	2A0FD4	DCI	BUFT+1
020C	16	LM	
020D	6A	LISL	2
020E	5C	LR	S,A
020F	2A0FD3	DCI	BUFT
0212	7F	LIS	15
0213	17	ST	
0214	17	ST	
0215	17	ST	
0216	20F0	P9	LI H'FO'
0218	17	ST	
0219	17	ST	
021A	17	ST	
021B	290000	P1	JMP DISPLAY

TABLE 18-continued

ADDRESS	CODE	ASSEMBLER		
021E	280281	P2	PI	P10
0211	4C		LR	A,S
0222	2503		CI	3
0224	64F6		BNZ	P1
0227	59		LRI	FOR,A
0228	79	P8	LIS	9
0229	57		LR	NU,A
022A	28019D	P6	PI	ETIC
022D	73		LIS	3
022E	5A		LR	TE2,A
022F	2A0FD2	P5	DCI	BUFT-1
0232	4A		LR	A,TE2
0233	8E		ADC	
0234	16		LM	
0235	8D		CM	
0236	8D		CM	
0237	8D		CM	
0238	9414		BNZ	P4
023A	3A		DS	TE2
023B	94F3		BNZ	P5
023D	2A0FCA		DCI	BUF+10
0240	20F0		LI	H'FO'
0242	17		ST	
0243	2A0FC1		DCI	BUF+1
0246	49		LR	A,FOR
0247	17		ST	
0248	70		CLR	
0249	58		LR	MOO,A
024A	290000		JMP	IN1
024D	37	P4	DS	NU
024E	81DB		BP	P6
0250	39		DS	FOR
0251	94D6		BNZ	P8
0253	90AF		BR	P7

The advantages deriving from the present invention are clearly apparent from the foregoing description.

For example, the microprocessor is used for performing a considerable number of functions, besides the control of the typical functions of the television receiver, so that its use is rendered optimal from the point of view of the cost/performance ratio.

Moreover, the additional functions are achieved by the circuits according to the invention without appreciably increasing the hardware of the receiver.

Obviously, many variants are possible.

Among these we mention the use of a different group of characters, comprising, for example, different graphic symbols, the use of a different format of the page of the note-book (for example, 6 lines of 40 characters each), or a different RAM memory capacity in order to store a different number of pages of messages or a different number of memorized programs.

Other variants may consist in the selection of other colors for the writings, in particular in the case of the calendar, or in the choice of a different mode of presentation of the calendar (for example, more months at the same time), or in the use of labels comprising a different number of characters in the case of the selection of a program by means of the mnemonic label. Many other variants are possible without departing from the novel principles of the present invention. For example, reference numeral 8 in FIG. 1 indicates a frequency-synthesis circuit of the PLL type for obtaining the tuning for a television receiver.

It is clear that the invention may also be used advantageously in an electronic tuning circuit with memorization of the voltage-synthesis type, in which each selected station has associated thereto and memorized a voltage in the form of a binary number which is then converted in a D/A converter into a tuning voltage to

be applied to the variable reactance circuit contained in the tuning unit of the receiver.

Therefore, the devices which obtain the memorization of the binary number may conveniently be dimensioned in such a manner as to contain also data relative to the labels to be associated to each memorized program.

Another variant may consist in displaying, besides the map of the memorized channels, also the map of the labels associated to the memorized channels. To obtain this, with reference to FIG. 12, it is sufficient that a block similar to block 183 stores in particular inner registers the codes relative to the characters forming the label, instead of the channel number.

Also, the remote-control unit 1 provided with the alphanumeric keyboard and the receiver circuit 2, the control unit 3, the memory 7, eventually the circuit 8 and the character generating circuit 4 and the final video circuit 5, conveniently modified, may be designed not only for a color type television set having the characteristics described hereinabove, but also for a color television set having different functions, and eventually also for a black and white television set and generally for any device provided with a display screen, usable not only as described hereinabove, but also, in an exclusive or differently combinatorial manner, as note-book, calendar, etc., and generally as a device for displaying on a screen (of any type) pictures formed by alphanumeric data, which device is used e.g. as peripheral unit in a computer, or minicomputer or microcomputer type system. Among the other variants based on the novel principles of the present invention, also the provision of a receiver of radioelectric signals in general may be mentioned, in which it is possible to receive stations emitting on pre-established frequencies, by simply requesting the mnemonic label formed by some alphanumeric characters which has been memorized in association with the station, according to the same principle which has already been described for the selection of television channels. In the case, for example, of a radio receiver set or a HI-FI tuner, in which the device for tuning the receivable frequencies is obviously designed for the field of radio frequencies, the variant with respect to the block diagram of FIG. 1 consists only in the fact that the character generator 4, or a character generator of a different, more simplified type, controls directly an alphanumeric character display device for the presentation of the mnemonic labels. The selection of the preferred and previously memorized station may take place by sending to the control unit 3 the code corresponding to the selected mnemonic label, or by means of the keyboard of the remote-control unit 1, or by means of a keyboard connected directly to control unit 3.

Finally, the variant shown in FIG. 15 relates to a set comprising reproducer means for the reproduction of alphanumeric data, on a display screen, or reproducer printing means or vocal reproducer means, and in respect of the block diagram shown in FIG. 1 there is missing the frequency-synthesis PLL circuit 8. In this case, the circuit 4 (which is a known circuit for the reproducer means 5) receives the signals from the unit 3 and generates the pilot control signals for the reproducer means 5 which reproduce on a screen, or printing reproducers (typewriter or printing machine) or vocal reproducers (reproducing the single character or also the combination of characters), so as to obtain the 64 types of alphanumeric characters corresponding to

the 64 keys which may be selected by means of the keyboard of the transmitter 1.

The operation of the set shown in FIG. 15 may be inferred from what has been described already in the foregoing. Thus, the apparatus shown in FIG. 1 may be used for different functions, including also the notebook function for memorizing determined data and reproducing them at the desired moment, or the calendar function for obtaining data of the type described already in the foregoing, with the advantage of having the control keyboard 1 freely movable, without it having to be constrained to a fixed and limited position relative to the set.

Finally, among the further variants we mention the possibility of providing in the control unit as many keys as the characters to be reproduced, without having to use a shift key for creating all the control signals necessary to reproduce all the characters.

We claim:

1. A television receiver comprising:

(a) display means for displaying a color image;

(b) character generation means capable of being operatively coupled at video frequencies to said display means;

(c) a keyboard for inputting coded data signals corresponding to characters and control signals corresponding to commands by remote control;

(d) random access memory (RAM) means for non-volatily storing data signals, and

(e) control means connected to said keyboard, said RAM means, and said character generation means, said control means comprising means for decoding coded data signals received from said keyboard, means for storing decoded data signals in said RAM means, means for sending said decoded data signals to said character generation means, means for sending format control signals received from said keyboard to said character generation means for displaying characters corresponding to said data signals received from said keyboard and formatting said characters in accordance with said format control signals, means for reading data signals stored in said RAM means, buffer means for temporarily storing data signals read from said RAM means, means for sending said data signals stored in said buffer means to said character generation means for displaying characters corresponding to said data signals, and means for controlling the operating mode of said television receiver in response to mode control signals received from said keyboard,

wherein said television receiver is placed in a first operational mode in which said character generation means is coupled to said keyboard for displaying a picture comprising formatted characters corresponding to data signals directly input by way of said keyboard and stored in said RAM means in response to first mode control signals and in a second operational mode in which said character generation means is coupled to said RAM means for displaying a picture comprising formatted characters corresponding to stored data signals read-out from said RAM means in response to second mode control signals.

2. The television receiver as defined in claim 1, wherein said control means further comprises a pointer register, means for selecting an address of said RAM means, each address being selected in response to re-

ceipt of a set of coded data signals corresponding to a character to be displayed and in dependence on the content of said pointer register, means for storing decoded data signals in binary form in a cell corresponding to said selected address in said RAM means, means for reading said stored code out of said RAM means, means for sending said read code to said character generation means, and means for modifying the contents of said pointer register by one unit.

3. The television receiver as defined in claim 2, wherein said control means further comprises means for sequentially reading the cells of said RAM means, means for sending the contents of said cells to said character generation means, means for receiving further coded data signals corresponding to further characters to be displayed and control signals corresponding to commands, and means for storing further decoded data signals in said cells of said RAM means in place of the previously stored decoded data signals.

4. The television receiver as defined in claim 1, wherein said character generation means comprise means for generating said characters in the form of dot matrices.

5. The television receiver as defined in claim 4, wherein said input means comprises means for assigning a color code to each character to be displayed, and said control means further comprises random access memory (RAM) buffer means including a first group of cells for storing decoded data signals corresponding to characters to be displayed and a second group of cells for storing decoded data signals corresponding to associated color codes received from said input means, and further comprises means for periodically sending, in synchronization with line and frame scanning on said receiver, said character and color data signals from said RAM buffer means to said character generation means for displaying said characters in a format comprising a predetermined number of lines each having a predetermined number of characters.

6. The television receiver as defined in claim 5, wherein said control means further comprises means for storing character and color data signals in said RAM buffer means corresponding to a single line of characters to be displayed in synchronization with the vertical scanning return period of said receiver.

7. The television receiver as defined in claim 1, wherein said input means comprises a keyboard having a cursor key for controlling the position of a first pointer character on said display means and a shift key for enabling at least one key of said keyboard which produces a first coded signal in response to depression to produce a second and different coded signal in response to depression, and said control means further comprises a pointer register for storing a value corresponding to the position of said pointer on said display means, means for modifying the contents of said pointer register in response to depression of said cursor key, and means for controlling said character generation means to display a second pointer character in place of said first pointer character in response to depression of said shift key.

8. The television receiver as defined in claim 1, wherein said input means comprises a keyboard having a color key for selecting one of a plurality of colors for the characters to be displayed following depression of said color key and means for assigning one of a plurality of color codes to each character to be displayed following said depression and before the next succeeding de-

pression of said color key, said plurality of color codes being assigned in a predetermined sequence which is cyclically repeated, the next color code in said predetermined sequence being assigned following the next depression of said color key, and said control means further comprises means for controlling said character generation means to display said first or second pointer character in the color selected by said depression of said color key.

9. The television receiver as defined in claim 1, wherein said control means further comprises read only memory (ROM) means for storing a binary coded sequence and means for reading out said stored binary coded sequence for controlling said character generation means to display an instruction message corresponding to said stored binary coded sequence, and said input means comprises a keyboard having an instruction key for actuating display of said instruction message in response to depression of said instruction key.

10. The television receiver as defined in claim 1, wherein said control means further comprises means for generating in a predetermined sequence the codes corresponding to each of a multiplicity of characters and means for controlling said character generation means to display a test pattern made up of said predetermined sequence of characters, and said input means comprises a keyboard having a test key for actuating display of said test pattern in response to depression of said test key.

11. The television receiver as defined in claim 1, wherein said input means comprises means for inputting coded data signals corresponding to tuning, color, brightness, or volume data for controlling said receiver in said first operating mode.

12. The television receiver as defined in claim 1, wherein said control means further comprises means for detecting a predetermined sequence of signals in a predetermined part of the signals corresponding to said complete alternative picture and means for activating a preset function on said receiver in response to detection of said predetermined sequence.

13. The television receiver as defined in claim 1, wherein said input means comprises a keyboard having a first function key for actuating display of a first calendar month and a multiplicity of data keys corresponding to arabic number 0-9, and means for generating a coded control signal representing a calendar operating mode and coded data signals identifying a calendar month to be displayed in response to depression of said first function key and said data keys respectively, and said control means further comprises means for switching to said calendar mode in response to receipt of said calendar mode control signal and means for executing said calendar mode whereby said calendar month data signals are decoded, the day of the first date of and first calendar month to be displayed is calculated, and signals are output for controlling said character generation means to generate a seven-column array of data representing said first calendar month on said display means in at least two colors.

14. The television receiver as defined in claim 13, wherein said control means further comprises means for associating coded signals representing a first color with a first group of days and a second color with a second group of days of a calendar month to be displayed.

15. The television receiver as defined in claim 14, wherein said input means comprises means for selecting a third color and means for associating said third color

with a predetermined day of a calendar month to be displayed, and said control means further comprises means for controlling said character generation means to generate a character representing said predetermined day in said third color on said display means.

16. The television receiver as defined in claim 13, wherein said control means further comprises means for controlling said character generation means to generate an instruction on said display means in response to receipt of said calendar mode control signal, said instruction requesting the input of numbers corresponding to the month and year of the calendar month to be displayed by the user, and said input means comprises means for generating said calendar month data signals in response to depression of keys corresponding to said month and year numbers.

17. The television receiver as defined in claim 13, wherein said keyboard has a second function key for actuating display of the calendar month next in sequence after said first calendar month, and said control means further comprises means for calculating the numbers corresponding to the month and year of said next calendar month in response to depression of said second function key and means for controlling said character generation means to generate a seven-column array of data representing said next calendar month on said display means.

18. The television receiver as defined in claim 1, wherein said input means comprises a remote control transmitting means having an alphanumeric keyboard and receiving means remotely coupled to receive radiation from said transmitting means and connected to output coded signals to said control means in response to receipt of radiation.

19. A television receiver comprising:

- (a) an alphanumeric character display means;
- (b) character generation means capable of being operatively coupled to said display means;
- (c) a keyboard for inputting coded data signals corresponding to alphanumeric characters and control signals corresponding to commands by remote control;
- (d) television signal tuning means for direct channel tuning;
- (e) random access memory (RAM) means for non-volatilely storing data signals, and
- (f) control means connected to said character generation means, said signal tuning means, said RAM means, and said keyboard;

wherein said RAM means comprises a first plurality of cells and a second plurality of cells associated with said first plurality of cells, said first plurality of cells storing data relating to tuning of television signals broadcast by a plurality of broadcast stations, and said second plurality of cells storing data forming identifying labels corresponding to each of those broadcast stations having tuning data stored in said first plurality of cells, said control means comprising means for decoding a sequence of data signals representing an identifying label received from said keyboard, means for storing a plurality of identifying labels in said second plurality of cells, means for receiving from said keyboard a sequence of data signals representing a selected identifying label, means for searching said second plurality of cells for stored data representing said selected identifying label received from said keyboard, means for reading the tuning data in those cells of said first

53

plurality which are associated with the cells of said second plurality in which said selected identifying label is stored, and means for sending the read tuning data to said tuning means in order to tune the broadcast station corresponding to said selected identifying label.

20. The radioelectric signal receiver as defined in claim 19, wherein in response to a second coded signal from said input means, said control means addresses a second group of cells in said RAM means, said second group of cells being associated with said first group of cells, and stores decoded signals in said second group of cells corresponding to the alphanumeric characters forming the message identifying said selected station.

21. The radioelectric signal receiver as defined in claim 19, wherein said tuning means comprises a frequency-synthesis circuit having a programmable divider and said tuning data stored in said RAM means comprises a division number, said tuning data being read from said RAM means and sent to said frequency-synthesis circuit by said control means for tuning in to the radioelectric signal.

22. The radioelectric signal receiver as defined in claim 20, wherein said control means comprises means

54

for decoding coded signals received from said input means, read only memory (ROM) means in which codes corresponding to a multiplicity of broadcast stations are stored, and means for comparing the broadcast station codes stored in said ROM means and said decoded selected station identification signal stored in second group of cells of said RAM means, said control means reading tuning data from said first group of cells of said RAM means corresponding to said selected station and sending said tuning data to said tuning means only in response to a signal output by said comparison means representing correspondence of said selected station identification signal and one of said broadcast station codes stored in said ROM means.

23. The radioelectric signal receiver as defined in claim 22, further comprising an auxiliary circuit for connection with a video recorder wherein said comparison means outputs a switching signal for enabling said auxiliary circuit in response to corresponding of decoded signals stored in said second group of cells of said RAM means and a predetermined combination stored in said ROM means.

* * * * *

25

30

35

40

45

50

55

60

65